

Integrin β 3 Rabbit mAb (AR1245)

Key Features

Host Species:	Rabbit
Reactivity:	Human, Mouse, Rat
Applications:	WB, IHC, IF, IP, ELISA
Isotype:	IgG, Kappa
MW:	87kD (Calculated) 100kD (Observed)

Recommended Dilution Ratios

IHC:	1:1000-4000
WB:	1:500-2000
IF:	1:200-1000
ELISA:	1:5000-20000
IP:	1:50-200

Storage

-15°C to -25°C/1 year (Do not lower than -25°C)

Basic Information

Clonality	Monoclonal
-----------	------------

Immunogen Information

Specificity	Endogenous
-------------	------------

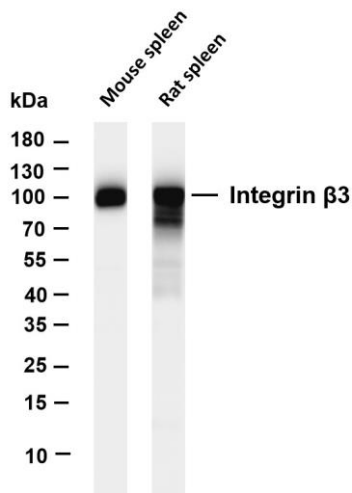
Target Information

Gene name	ITGB3 GP3A
Protein Name	Integrin beta-3 (Platelet membrane glycoprotein IIIa) (GPIIIa) (CD antigen CD61)

Organism	Gene ID	UniProt ID
Human	3690	P05106
Mouse	16416	O54890

Cellular Localization	Membrane
Tissue specificity	Isoform beta-3A and isoform beta-3C are widely expressed. Isoform beta-3A is specifically expressed in osteoblast cells; isoform beta-3C is specifically expressed in prostate and testis.

Validation Data



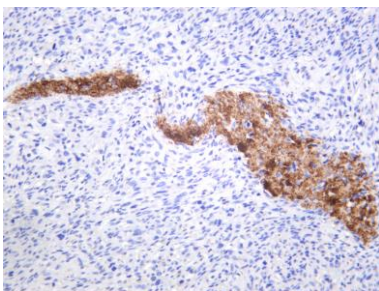
Various whole cell lysates were separated by 4-20% SDS-PAGE, and the membrane was blotted with anti-Integrin $\beta 3$ antibody. The HRP conjugated Goat anti-Rabbit IgG(H + L) antibody was used to detect the antibody.

Lane 1: Mouse spleen

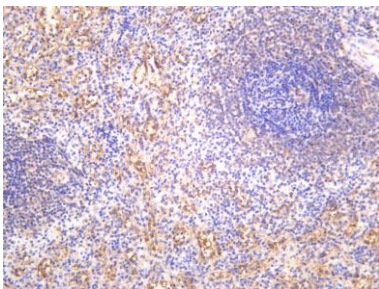
Lane 2: Rat spleen

Predicted band size: 87kDa

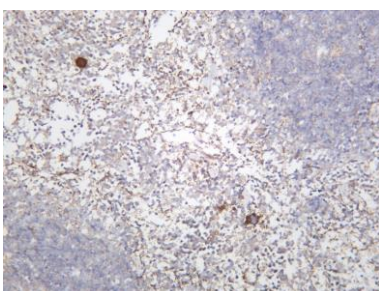
Observed band size: 100kDa



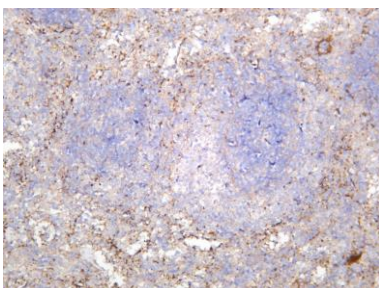
Human osteosarcomas was stained with anti-Integrin $\beta 3$ rabbit antibody



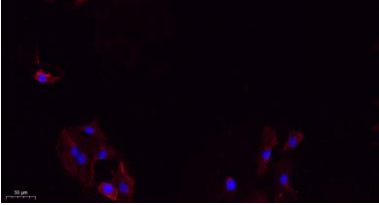
Human spleen was stained with anti-Integrin $\beta 3$ rabbit antibody



Mouse spleen was stained with anti-Integrin $\beta 3$ rabbit antibody



Rat spleen was stained with anti-Integrin $\beta 3$ rabbit antibody



Immunofluorescence analysis of A549.

1. primary Antibody(red) was diluted at 1:200(4°C overnight).
2. Goat Anti Rabbit IgG (H&L)-Alexa Fluor 594 Secondary antibody was diluted at 1:1000(room temperature, 50min).
3. DAPI (blue) 10min.

For Research Use Only