

LYVE1 Rabbit mAb (AR1248)

Key Features

| | |
|---------------|--------------------------------------|
| Host Species: | Rabbit |
| Reactivity: | Human,Mouse,Rat |
| Applications: | WB,IHC,IF,IP,ELISA |
| Isotype: | IgG,Kappa |
| MW: | 35kD (Calculated) 35kD (Observed) |

Recommended Dilution Ratios

| | |
|--------|--------------|
| IHC: | 1:200-1000 |
| WB: | 1:2000-10000 |
| IF: | 1:200-1000 |
| ELISA: | 1:5000-20000 |
| IP: | 1:50-200 |

Storage

-15°C to -25°C/1 year (Do not lower than -25°C)

Basic Information

| | |
|-----------|------------|
| Clonality | Monoclonal |
|-----------|------------|

Immunogen Information

| | |
|-------------|------------|
| Specificity | Endogenous |
|-------------|------------|

Target Information

| | |
|--------------|--|
| Gene name | LYVE1 CRSBP1 HAR XLKD1 UNQ230/PRO263 Lymphatic vessel endothelial hyaluronic acid receptor 1 (LYVE-1) (Cell surface retention sequence-binding protein 1) (CRSBP-1) (Extracellular link domain-containing protein 1) (Hyaluronic acid receptor) |
| Protein Name | |

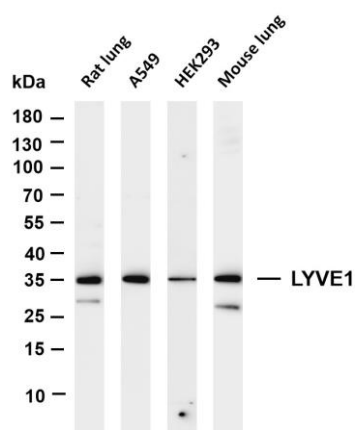
| Organism | Gene ID | UniProt ID |
|----------|---------|------------|
| Human | 10894 | Q9Y5Y7 |
| Mouse | | Q8BHC0 |

| | |
|-----------------------|----------|
| Cellular Localization | Membrane |
|-----------------------|----------|

Tissue specificity

Mainly expressed in endothelial cells lining lymphatic vessels.

Validation Data



Various whole cell lysates were separated by 4-20% SDS-PAGE, and the membrane was blotted with anti-LYVE1 antibody. The HRP conjugated Goat anti-Rabbit IgG(H + L) antibody was used to detect the antibody.

Lane 1: Rat lung

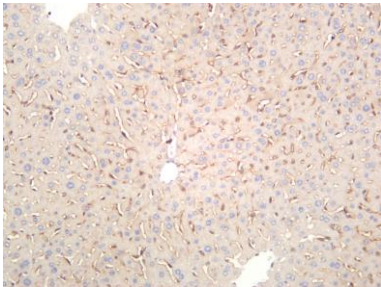
Lane 2: A549

Lane 3: HEK293

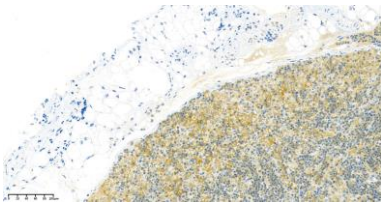
Lane 4: Mouse lung

Predicted band size: 35kDa

Observed band size: 35kDa



Mouse liver was stained with anti-LYVE1 rabbit antibody



Mouse intestinal lymph node was stained with anti-LYVE1 Rabbit antibody

For Research Use Only