

Fibronectin Rabbit mAb (AR1253)

Key Features

Host Species:	Rabbit
Reactivity:	Human, Mouse, Rat
Applications:	WB, IHC, IF, IP, ELISA
Isotype:	IgG, Kappa
MW:	272kD (Calculated) 285kD (Observed)

Recommended Dilution Ratios

IHC:	1:1000-5000
WB:	1:2000-10000
IF:	1:200-1000
ELISA:	1:5000-20000
IP:	1:50-200

Storage

-15°C to -25°C/1 year (Do not lower than -25°C)

Basic Information

Clonality	Monoclonal
-----------	------------

Immunogen Information

Specificity	Endogenous
-------------	------------

Target Information

Gene name	FN1
-----------	-----

Protein Name	Fibronectin
--------------	-------------

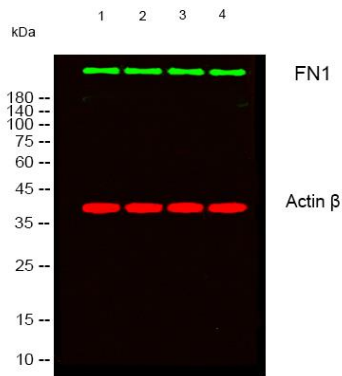
Organism	Gene ID	UniProt ID
Human	2335	P02751
Mouse	14268	P11276
Rat		P04937

Cellular Localization	Secreted
-----------------------	----------

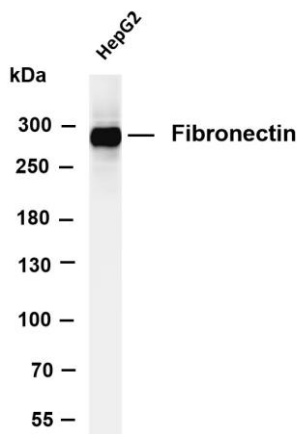
Tissue specificity	Expressed in the inner limiting membrane and around blood vessels in the retina (at protein level) (PubMed:29777959). Plasma
--------------------	--

FN (soluble dimeric form) is secreted by hepatocytes. Cellular FN (dimeric or cross-linked multimeric forms), made by fibroblasts, epithelial and other cell types, is deposited as fibrils in the extracellular matrix. Ugl-Y1, Ugl-Y2 and Ugl-Y3 are found in urine (PubMed:17614963)

Validation Data



Western blot analysis of lysates from 1) 3T3, 2) KB, 3) K562, 4) 293T cells, (Green) primary antibody was diluted at 1:1000, 4° overnight, secondary antibody was diluted at 1:10000, 37° 1hour. (Red) Actin β Monoclonal Antibody(5B7) antibody was diluted at 1:5000 as loading control, 4° overnight, secondary antibody was diluted at 1:10000, 37° 1hour

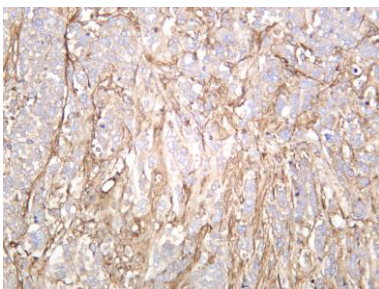


Various whole cell lysates were separated by 4-8% SDS-PAGE, and the membrane was blotted with anti-Fibronectin antibody. The HRP conjugated Goat anti-Rabbit IgG(H + L) antibody was used to detect the antibody.

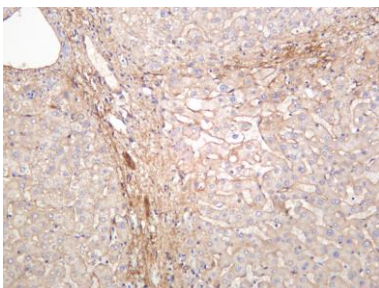
Lane 1: HepG2

Predicted band size: 272kDa

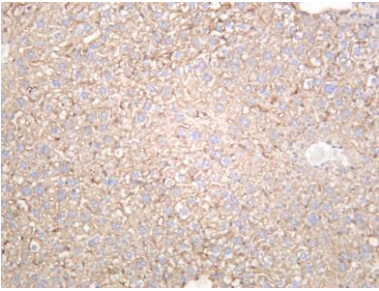
Observed band size: 285kDa



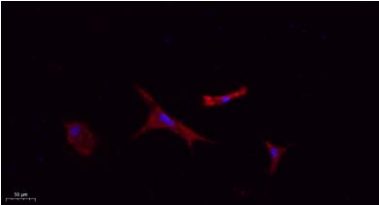
Human breast was stained with anti-Fibronectin rabbit antibody



Human liver was stained with anti-Fibronectin rabbit antibody



Mouse liver was stained with anti-Fibronectin rabbit antibody



Immunofluorescence analysis of A549.

1. primary Antibody(red) was diluted at 1:200(4°C overnight).
2. Goat Anti Rabbit IgG (H&L) - Alexa Fluor 594 Secondary antibody was diluted at 1:1000(room temperature, 50min).
3. DAPI (blue) 10min

For Research Use Only