

SPTBN1 Rabbit mAb (AR1254)

Key Features

Host Species:	Rabbit
Reactivity:	Human, Mouse, Rat
Applications:	WB, IHC, IF, IP, ELISA
Isotype:	IgG, Kappa
MW:	275kD (Calculated) 275kD (Observed)

Recommended Dilution Ratios

IHC:	1:1000-5000
WB:	1:2000-10000
IF:	1:200-1000
ELISA:	1:5000-20000
IP:	1:50-200

Storage

-15°C to -25°C/1 year (Do not lower than -25°C)

Basic Information

Clonality	Monoclonal
-----------	------------

Immunogen Information

Specificity	Endogenous
-------------	------------

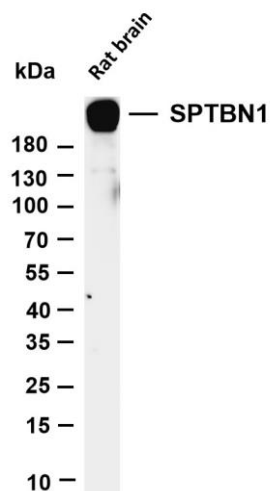
Target Information

Gene name	SPTBN1
Protein Name	Spectrin beta chain non-erythrocytic 1

Organism	Gene ID	UniProt ID
Human	6711	Q01082
Mouse	20742	Q62261

Cellular Localization	Cytoplasm, Membrane
Tissue specificity	Isoform 2 is present in brain, lung and kidney (at protein level).

Validation Data

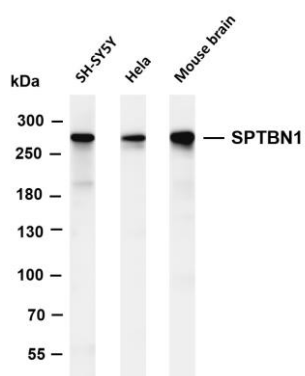


Various whole cell lysates were separated by 4-20% SDS-PAGE, and the membrane was blotted with anti-SPTBN1 antibody. The HRP conjugated Goat anti-Rabbit IgG(H + L) antibody was used to detect the antibody.

Lane 1: Rat brain

Predicted band size: 275kDa

Observed band size: 275kDa



Various whole cell lysates were separated by 4-8% SDS-PAGE, and the membrane was blotted with anti-SPTBN1 antibody. The HRP conjugated Goat anti-Rabbit IgG(H + L) antibody was used to detect the antibody.

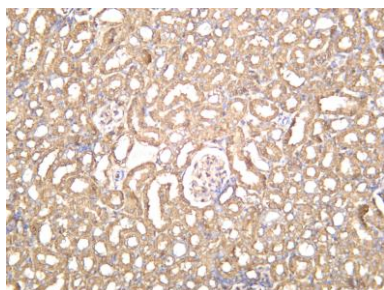
Lane 1: SH-SY5Y

Lane 2: HeLa

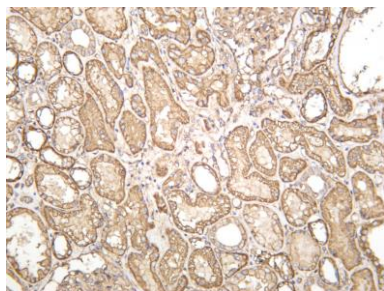
Lane 3: Mouse brain

Predicted band size: 275kDa

Observed band size: 275kDa



Rat kidney was stained with anti-SPTBN1 rabbit antibody



Human kidney was stained with anti-SPTBN1 rabbit antibody

For Research Use Only