

LAMB1 Rabbit mAb (AR1256)

Key Features

Host Species:	Rabbit
Reactivity:	Human, Mouse, Rat
Applications:	WB, IHC, IF, IP, ELISA
Isotype:	IgG, Kappa
MW:	198kD (Calculated) 240kD (Observed)

Recommended Dilution Ratios

IHC:	1:200-1000
WB:	1:2000-10000
IF:	1:200-1000
ELISA:	1:5000-20000
IP:	1:50-200

Storage

-15°C to -25°C/1 year (Do not lower than -25°C)

Basic Information

Clonality	Monoclonal
-----------	------------

Immunogen Information

Specificity	Endogenous
-------------	------------

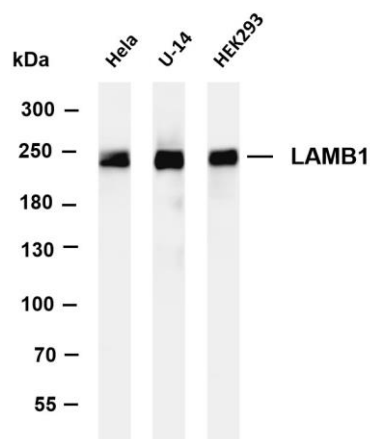
Target Information

Gene name	LAMB1
Protein Name	Laminin subunit beta-1

Organism	Gene ID	UniProt ID
Human	3912	P07942
Mouse		P02469

Cellular Localization	Secreted
Tissue specificity	Colon, Liver, Muscle, Plasma

Validation Data



Various whole cell lysates were separated by 4-8% SDS-PAGE, and the membrane was blotted with anti- LAMB1 antibody. The HRP conjugated Goat anti-Rabbit IgG(H + L) antibody was used to detect the antibody.

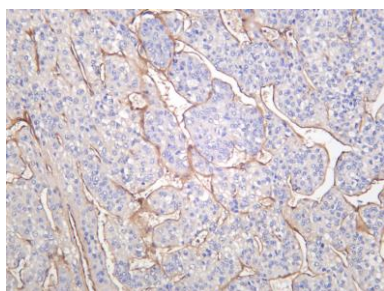
Lane 1: HeLa

Lane 2: U-14

Lane 3: HEK293

Predicted band size: 198kDa

Observed band size: 240kDa



Human hepatocellular carcinoma was stained with anti-LAMB1 rabbit antibody

For Research Use Only