

Ezrin Rabbit mAb (AR1255)

Key Features

Host Species:	Rabbit
Reactivity:	Human, Mouse, Rat
Applications:	WB, IHC, IF, IP, ELISA
Isotype:	IgG, Kappa
MW:	69kD (Calculated) 80kD (Observed)

Recommended Dilution Ratios

IHC:	1:1000-4000
WB:	1:2000-10000
IF:	1:200-1000
ELISA:	1:5000-20000
IP:	1:50-200

Storage

-15°C to -25°C/1 year (Do not lower than -25°C)

Basic Information

Clonality	Monoclonal
-----------	------------

Immunogen Information

Specificity	Endogenous
-------------	------------

Target Information

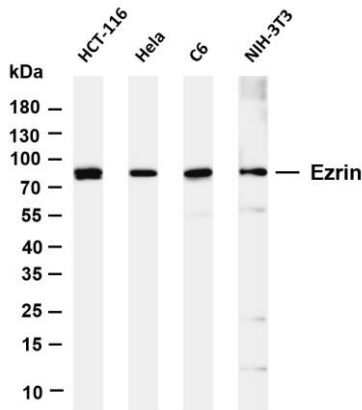
Gene name	EZR
Protein Name	Ezrin

Organism	Gene ID	UniProt ID
Human	7430	P15311
Mouse	22350	P26040
Rat	54319	P31977

Cellular Localization	Cytoplasm, Membrane
Tissue specificity	Expressed in cerebral cortex, basal ganglia, hippocampus, hypophysis, and optic nerve. Weakly expressed in brain stem and

diencephalon. Stronger expression was detected in gray matter of frontal lobe compared to white matter (at protein level).
 Component of the microvilli of intestinal epithelial cells.
 Preferentially expressed in astrocytes of hippocampus, frontal cortex, thalamus, parahippocampal cortex, amygdala, insula, and corpus callosum. Not detected in neurons in most tissues studied.

Validation Data



Various whole cell lysates were separated by 4-20% SDS-PAGE, and the membrane was blotted with anti-Ezrin antibody. The HRP conjugated Goat anti-Rabbit IgG(H + L) antibody was used to detect the antibody.

Lane 1: HCT-116

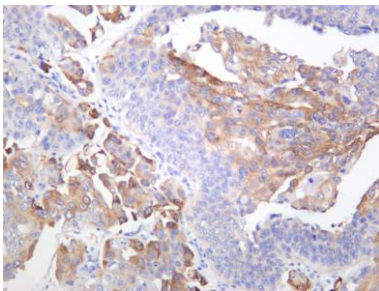
Lane 2: HeLa

Lane 3: C6

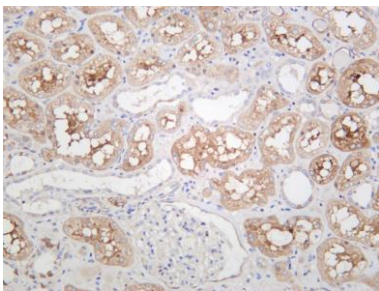
Lane 4: NIH-3T3

Predicted band size: 69kDa

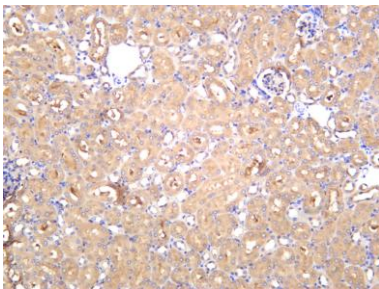
Observed band size: 80kDa



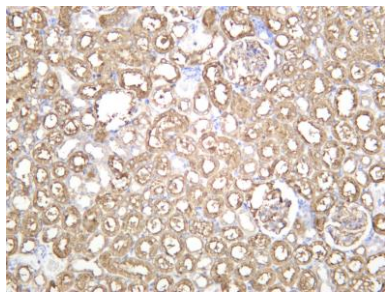
Human bladder carcinoma was stained with anti-Ezrin rabbit antibody



Human kidney was stained with anti-Ezrin rabbit antibody



Mouse kidney was stained with anti-Ezrin rabbit antibody



Rat kidney was stained with anti-Ezrin rabbit antibody

For Research Use Only