

His Tag Rabbit mAb (AR1258)

Key Features

Host Species:	Rabbit
Applications:	WB,IF,IP,ELISA
Isotype:	IgG,Kappa
MW:	50kD (Calculated) 55kD (Observed)

Recommended Dilution Ratios

WB:	1:2000-10000
IF:	1:200-1000
ELISA:	1:5000-20000
IP:	1:50-200

Storage

-15°C to -25°C/1 year (Do not lower than -25°C)

Basic Information

Clonality	Monoclonal
-----------	------------

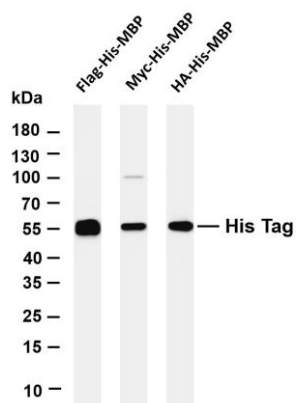
Immunogen Information

Specificity	The antibody can detect His-Tag fusion proteins.
-------------	--

Target Information

Gene name	His-Tag
Protein Name	His-Tag

Validation Data



Various whole cell lysates were separated by 4-20% SDS-PAGE, and the membrane was blotted with anti-His Tag antibody. The HRP conjugated Goat anti-Rabbit IgG(H + L) antibody was used to detect the antibody.

Lane 1: Flag-His-MBP

Lane 2: Myc-His-MBP

Lane 3: HA-His-MBP

Predicted band size: 50kDa

Observed band size: 55kDa

For Research Use Only