

OCN Rabbit mAb (AR1259)

Key Features

Host Species:	Rabbit
Reactivity:	Human, Mouse, Rat
Applications:	WB, IHC, IF, IP, ELISA
Isotype:	IgG, Kappa
MW:	59kD (Calculated) 65kD (Observed)

Recommended Dilution Ratios

IHC:	1:200-1000
WB:	1:2000-10000
IF:	1:200-1000
ELISA:	1:5000-20000
IP:	1:50-200

Storage

-15°C to -25°C/1 year (Do not lower than -25°C)

Basic Information

Clonality	Monoclonal
-----------	------------

Immunogen Information

Specificity	Endogenous
-------------	------------

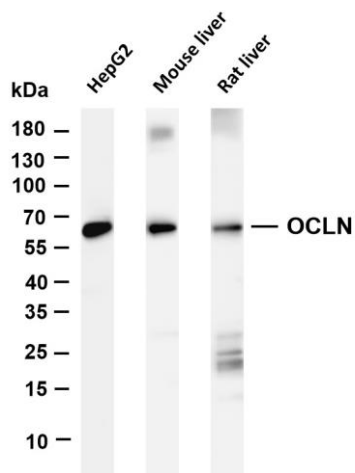
Target Information

Gene name	OCN
Protein Name	Occludin; OCN

Organism	Gene ID	UniProt ID
Human	100506658	Q16625
Mouse		Q61146
Rat		Q6P6T5

Cellular Localization	Membrane
Tissue specificity	Localized at tight junctions of both epithelial and endothelial cells. Highly expressed in kidney. Not detected in testis.

Validation Data



Various whole cell lysates were separated by 4-20% SDS-PAGE, and the membrane was blotted with anti-OCLN antibody. The HRP conjugated Goat anti-Rabbit IgG(H + L) antibody was used to detect the antibody.

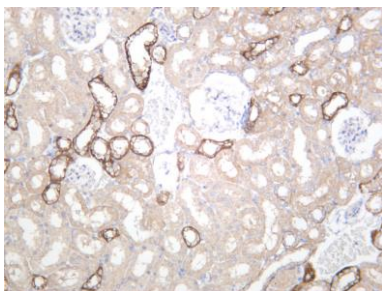
Lane 1: HepG2

Lane 2: Mouse liver

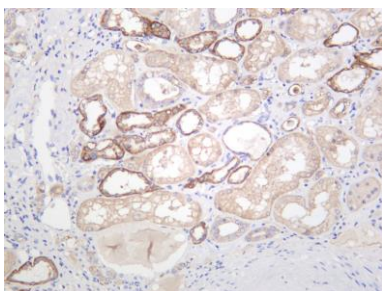
Lane 3: Rat liver

Predicted band size: 59kDa

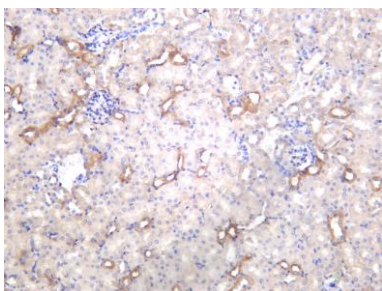
Observed band size: 65kDa



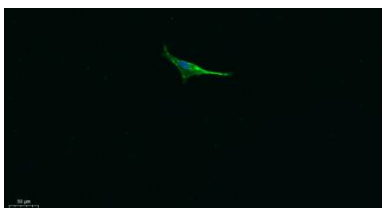
Rat kidney was stained with anti-OCLN rabbit antibody



Human kidney was stained with anti-OCLN rabbit antibody



Mouse kidney was stained with anti-OCLN rabbit antibody



Immunofluorescence analysis of A549.

1. primary Antibody was diluted at 1:200(4°C overnight).
2. Goat Anti Rabbit IgG (H&L) - Alexa Fluor 488 Secondary antibody was diluted at 1:1000(room temperature, 50min).
3. DAPI (blue) 10min.