

eIF2 α Rabbit mAb (AR1257)

Key Features

Host Species:	Rabbit
Reactivity:	Human, Mouse, Rat
Applications:	WB, IHC, IF, IP, ELISA
Isotype:	IgG, Kappa
MW:	36kD (Calculated) 36kD (Observed)

Recommended Dilution Ratios

IHC:	1:1000-5000
WB:	1:2000-10000
IF:	1:200-1000
ELISA:	1:5000-20000
IP:	1:50-200

Storage

-15°C to -25°C/1 year (Do not lower than -25°C)

Basic Information

Clonality	Monoclonal
-----------	------------

Immunogen Information

Specificity	Endogenous
-------------	------------

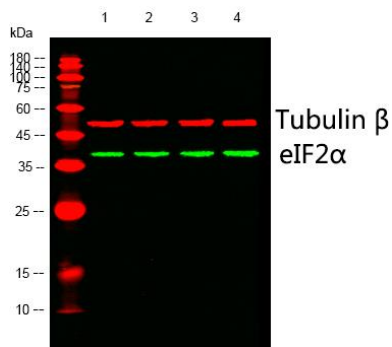
Target Information

Gene name	EIF2S1
Protein Name	Eukaryotic translation initiation factor 2 subunit 1

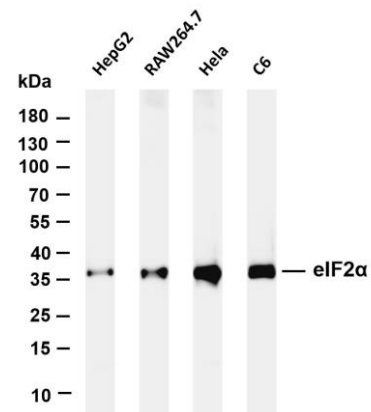
Organism	Gene ID	UniProt ID
Human	1965	P05198
Mouse	13665	Q6ZWX6
Rat	54318	P68101

Cellular Localization	Cytoplasm
Tissue specificity	B cells, Brain, Fibroblast, Placenta

Validation Data



Western blot analysis of lysates from 1) MCF-7, 2) A549, 3) K562, 4) HEK293 cells, (Green) primary antibody was diluted at 1:1000, 4° overnight, Dylight 800 secondary antibody was diluted at 1:10000, 37° 1 hour. (Red) Tubulin β Monoclonal Antibody(5G3) antibody was diluted at 1:5000 as loading control, 4° overnight, Dylight 680 secondary antibody was diluted at 1:10000, 37° 1 hour.



Various whole cell lysates were separated by 4-20% SDS-PAGE, and the membrane was blotted with anti-eIF2α antibody. The HRP conjugated Goat anti-Rabbit IgG(H + L) antibody was used to detect the antibody.

Lane 1: HepG2

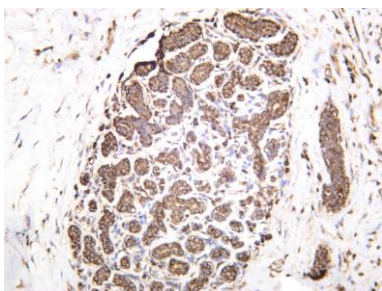
Lane 2: RAW264.7

Lane 3: Hela

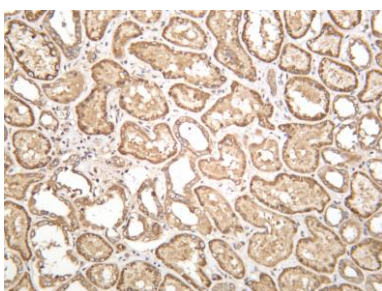
Lane 4: C6

Predicted band size: 36kDa

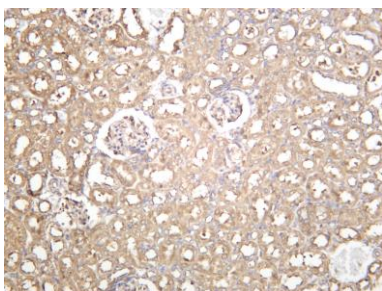
Observed band size: 36kDa



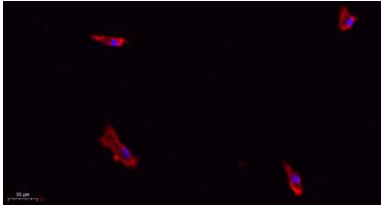
Human breast was stained with anti-eIF2α rabbit antibody



Human kidney was stained with anti-eIF2α rabbit antibody

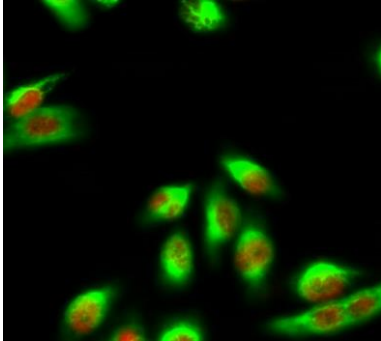


Rat kidney was stained with anti-eIF2α rabbit antibody



Immunofluorescence analysis of A549.

1. primary Antibody(red) was diluted at 1:200(4°C overnight).
2. Goat Anti Rabbit IgG (H&L) - Alexa Fluor 594 Secondary antibody was diluted at 1:1000(room temperature, 50min).
3. DAPI (blue) 10min.



Immunofluorescence analysis of HeLa cell.

1. eIF2α Antibody(red) was diluted at 1:200(4° overnight). Caspase 9 Monoclonal Antibody(3-20)(green) was diluted at 1:200(4° overnight).
2. Goat Anti Rabbit Alexa Fluor 594 was diluted at 1:1000(room temperature, 50min). Goat Anti Mouse Alexa Fluor 488 was diluted at 1:1000(room temperature, 50min)

For Research Use Only