

ALPP Rabbit mAb (AR1260)

Key Features

Host Species:	Rabbit
Reactivity:	Human, Mouse, Rat
Applications:	WB, IHC, IF, IP, ELISA
Isotype:	IgG, Kappa
MW:	58kD (Calculated) 70kD (Observed)

Recommended Dilution Ratios

IHC:	1:200-1000
WB:	1:2000-10000
IF:	1:200-1000
ELISA:	1:5000-20000
IP:	1:50-200

Storage

-15°C to -25°C/1 year (Do not lower than -25°C)

Basic Information

Clonality	Monoclonal
-----------	------------

Immunogen Information

Specificity	Endogenous
-------------	------------

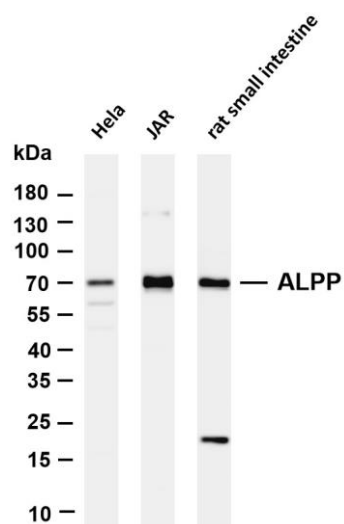
Target Information

Gene name	ALPP
Protein Name	Alkaline phosphatase, placental type

Organism	Gene ID	UniProt ID
Human	250	P05187

Cellular Localization	Membrane
Tissue specificity	Detected in placenta (at protein level).

Validation Data



Various whole cell lysates were separated by 4-20% SDS-PAGE, and the membrane was blotted with anti-ALPP antibody. The HRP conjugated Goat anti-Rabbit IgG(H + L) antibody was used to detect the antibody.

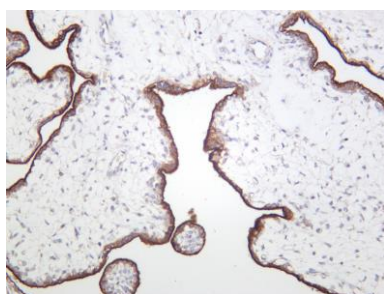
Lane 1: HeLa

Lane 2: JAR

Lane 3: Rat small intestine

Predicted band size: 58kDa

Observed band size: 70kDa



Human placenta was stained with anti-ALPP rabbit antibody

For Research Use Only