

## Bcl-2 Rabbit mAb (AR1261)

### Key Features

Host Species:	Rabbit
Reactivity:	Human,Mouse,Rat
Applications:	WB,IHC,IF,IP,ELISA
Isotype:	IgG,Kappa
MW:	26kD (Calculated) 26kD (Observed)

### Recommended Dilution Ratios

IHC:	1:500-2000
WB:	1:2000-10000
IF:	1:200-1000
ELISA:	1:5000-20000
IP:	1:50-200

### Storage

-15°C to -25°C/1 year (Do not lower than -25°C)

### Basic Information

Clonality	Monoclonal
-----------	------------

### Immunogen Information

Specificity	Endogenous
-------------	------------

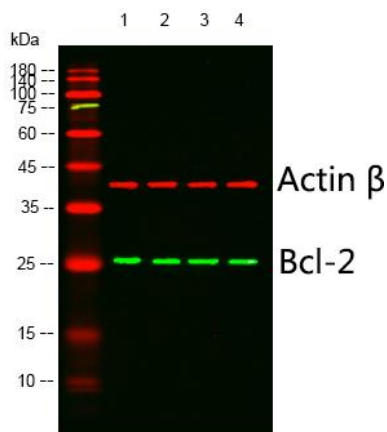
### Target Information

Gene name	BCL2
Protein Name	Apoptosis regulator Bcl-2

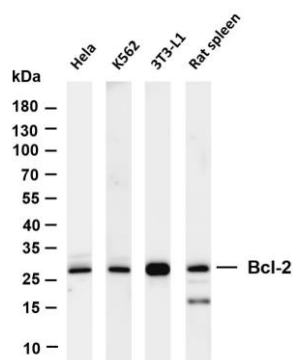
Organism	Gene ID	UniProt ID
Human	596	P10415
Mouse	12043	P10417
Rat	24224	P49950

Cellular Localization	Cytoplasm
Tissue specificity	Expressed in a variety of tissues.

## Validation Data



Western blot analysis of lysates from 1) mouse-liver, 2) mouse-brain, 3) mouse-lung, 4) mcf-7 cells, (Green) primary antibody was diluted at 1:1000, 4° overnight, Dylight 800 secondary antibody was diluted at 1:10000, 37° 1 hour. (Red) Actin  $\beta$  Monoclonal Antibody(5B7) antibody was diluted at 1:5000 as loading control, 4° overnight, Dylight 680 secondary antibody was diluted at 1:10000, 37° 1 hour.



Various whole cell lysates were separated by 4-20% SDS-PAGE, and the membrane was blotted with anti-Bcl-2 antibody. The HRP-conjugated Goat anti-Rabbit IgG(H + L) antibody was used to detect the antibody.

Lane 1: HeLa

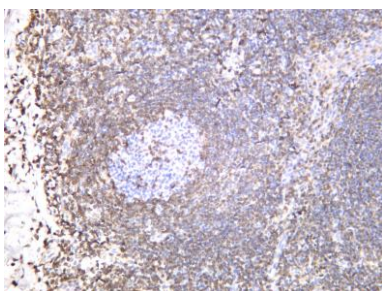
Lane 2: K562

Lane 3: 3T3-L1

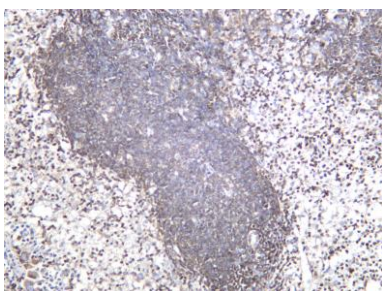
Lane 4: Rat spleen

Predicted band size: 26kDa

Observed band size: 26kDa



Human spleen was stained with anti-Bcl-2 rabbit antibody



Rat spleen was stained with anti-Bcl-2 rabbit antibody

For Research Use Only