

CaMKII β Rabbit mAb (AR1265)

Key Features

Host Species:	Rabbit
Reactivity:	Human,Mouse,Rat
Applications:	WB,IF,IP,ELISA
Isotype:	IgG,Kappa
MW:	60kD (Calculated) 54kD,60kD (Observed)

Recommended Dilution Ratios

WB:	1:2000-10000
IF:	1:200-1000
ELISA:	1:5000-20000
IP:	1:50-200

Storage

-15°C to -25°C/1 year (Do not lower than -25°C)

Basic Information

Clonality	Monoclonal
-----------	------------

Immunogen Information

Specificity	Endogenous
-------------	------------

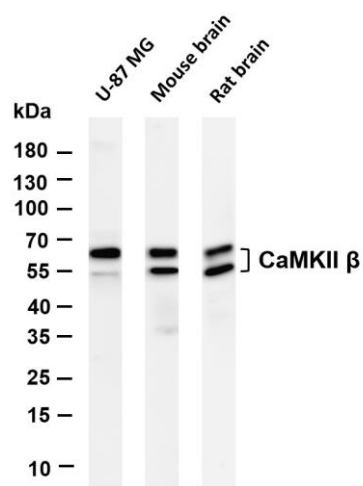
Target Information

Gene name	CAMK2B CAM2 CAMK2 CAMKB
Protein Name	Calcium/calmodulin-dependent protein kinase type II subunit beta (CaM kinase II subunit beta) (CaMK-II subunit beta) (EC 2.7.11.17)

Organism	Gene ID	UniProt ID
Human	816	Q13554
Mouse		P28652
Rat		P08413

Cellular Localization	Cytoplasm
Tissue specificity	Widely expressed. Expressed in adult and fetal brain. Expression is slightly lower in fetal brain. Expressed in skeletal muscle.

Validation Data



Various whole cell lysates were separated by 4-20% SDS-PAGE, and the membrane was blotted with anti-CaMKII β antibody. The HRP-conjugated Goat anti-Rabbit IgG(H + L) antibody was used to detect the antibody.

Lane1: U-87 MG

Lane 2: Mouse brain

Lane 3: Rat brain

Predicted band size: 60kDa

Observed band size: 54, 60kDa

For Research Use Only