

c-Jun Rabbit mAb (AR1263)

Key Features

Host Species:	Rabbit
Reactivity:	Human, Mouse, Rat
Applications:	WB, IHC, IF, IP, ELISA
Isotype:	IgG, Kappa
MW:	36kD (Calculated) 43kD (Observed)

Recommended Dilution Ratios

IHC:	1:200-1000
WB:	1:2000-10000
IF:	1:200-1000
ELISA:	1:5000-20000
IP:	1:50-200

Storage

-15°C to -25°C/1 year (Do not lower than -25°C)

Basic Information

Clonality	Monoclonal
-----------	------------

Immunogen Information

Specificity	Endogenous
-------------	------------

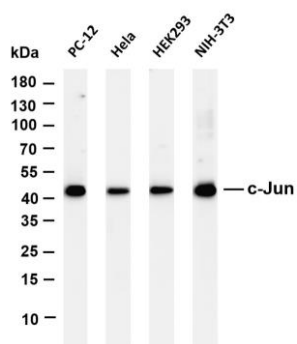
Target Information

Gene name	JUN
Protein Name	C-Jun (Hydroxylated-p244); Transcription factor AP-1; jun; c-jun; AP-1

Organism	Gene ID	UniProt ID
Human	3725	P05412
Mouse	16476	P05627
Rat	24516	P17325

Cellular Localization	Nucleus
Tissue specificity	Expressed in the developing and adult prostate and prostate cancer cells.

Validation Data



Various whole cell lysates were separated by 4-20% SDS-PAGE, and the membrane was blotted with anti-c-Jun antibody. The HRP-conjugated Goat anti-Rabbit IgG(H + L) antibody was used to detect the antibody.

Lane 1: PC-12

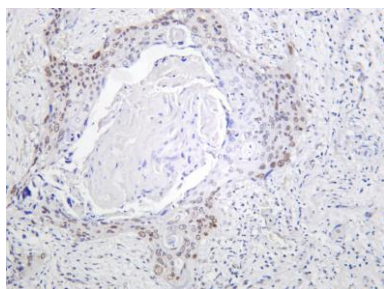
Lane 2: HeLa

Lane 3: HEK293

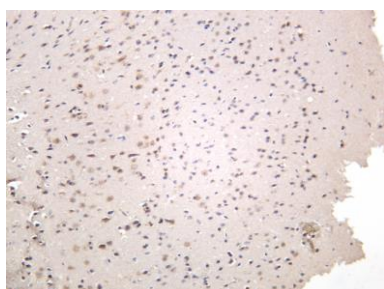
Lane 4: NIH-3T3

Predicted band size: 36kDa

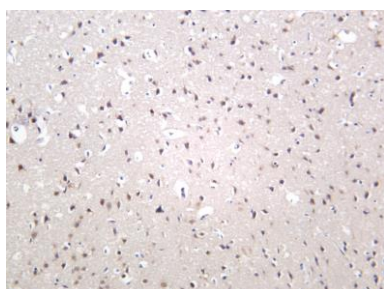
Observed band size: 43kDa



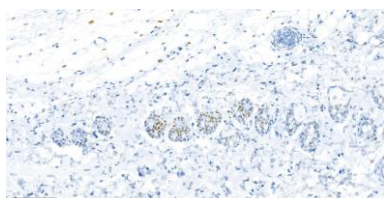
Human cervical carcinoma was stained with anti-c-Jun rabbit antibody



Mouse brain was stained with anti-c-Jun rabbit antibody



Rat brain was stained with anti-c-Jun rabbit antibody



Rat skin was stained with anti-c-Jun Rabbit antibody

For Research Use Only