

STAT3 Rabbit mAb (AR1267)

Key Features

Host Species:	Rabbit
Reactivity:	Human,Mouse,Rat
Applications:	WB,IHC,IF,IP,ELISA
Isotype:	IgG,Kappa
MW:	88kD (Calculated) 88kD (Observed)

Recommended Dilution Ratios

IHC:	1:100-500
WB:	1:1000-5000
IF:	1:200-1000
ELISA:	1:5000-20000
IP:	1:50-200

Storage

-15°C to -25°C/1 year (Do not lower than -25°C)

Basic Information

Clonality	Monoclonal
-----------	------------

Immunogen Information

Specificity	Endogenous
-------------	------------

Target Information

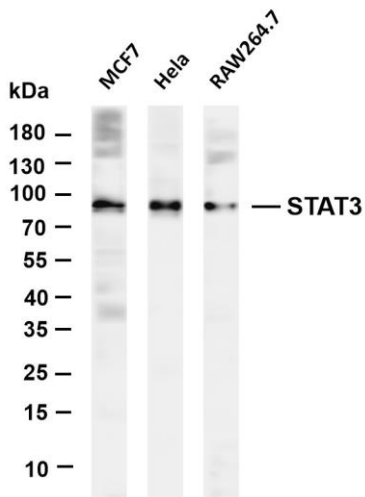
Gene name	STAT3
Protein Name	Signal transducer and activator of transcription 3

Organism	Gene ID	UniProt ID
Human	6774	P40763
Mouse	20848	P42227
Rat	25125	P52631

Cellular Localization	Cytoplasm, Nucleus
Tissue specificity	Heart, brain, placenta, lung, liver, skeletal muscle, kidney and pancreas. Expressed in naive CD4(+) T cells as well as T-helper Th17,

Th1 and Th2 cells.

Validation Data



Various whole cell lysates were separated by 4-20% SDS-PAGE, and the membrane was blotted with anti-STAT3 antibody. The HRP-conjugated Goat anti-Rabbit IgG(H + L) antibody was used to detect the antibody.

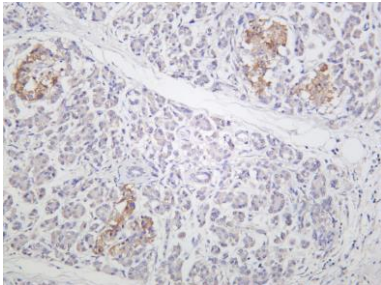
Lane 1: MCF7

Lane 2: HeLa

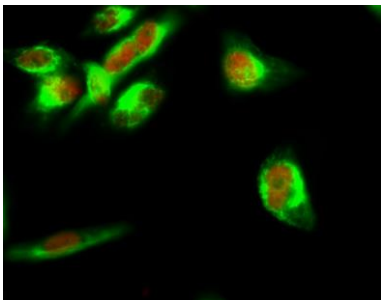
Lane 3: RAW264.7

Predicted band size: 88kDa

Observed band size: 88kDa



Human pancreas was stained with anti-STAT3 rabbit antibody



Immunofluorescence analysis of HeLa cell.

1. Stat3 Antibody(red) was diluted at 1:200(4° overnight). β -tubulin Monoclonal Antibody(M7)(green) was diluted at 1:200(4 ° overnight).
2. Goat Anti Rabbit Alexa Fluor 594 was diluted at 1:1000(room temperature, 50min). Goat Anti Mouse Alexa Fluor 488 was diluted at 1:1000(room temperature, 50min).

For Research Use Only