

## mTOR (Phospho Ser2448) Rabbit mAb (AR1268)

### Key Features

Host Species:	Rabbit
Reactivity:	Human,Mouse,Rat
Applications:	WB,IHC,IF,IP,ELISA
Isotype:	IgG,Kappa
MW:	289kD (Calculated) 250kD (Observed)

### Recommended Dilution Ratios

IHC:	1:500-2000
WB:	1:2000-10000
IF:	1:200-1000
ELISA:	1:5000-20000
IP:	1:50-200

### Storage

-15°C to -25°C/1 year (Do not lower than -25°C)

### Basic Information

Clonality	Monoclonal
-----------	------------

### Immunogen Information

Specificity	This antibody detects endogenous levels of mTOR only when phosphorylated at Ser2448.This antibody does not recognize phosphorylated at other sites.
-------------	---

### Target Information

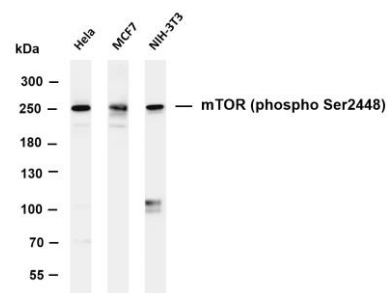
Gene name	MTOR
Protein Name	Serine/threonine-protein kinase mTOR

Organism	Gene ID	UniProt ID
Human	2475	P42345
Mouse	56717	Q9JLN9
Rat	56718	P42346

Cellular Localization	Cytoplasm
-----------------------	-----------

## Tissue specificity

## Validation Data



Expressed in numerous tissues, with highest levels in testis.

Various whole cell lysates were separated by 4-8% SDS-PAGE, and the membrane was blotted with anti-mTOR (phospho Ser2448) antibody. The HRP-conjugated Goat anti-Rabbit IgG(H + L) antibody was used to detect the antibody.

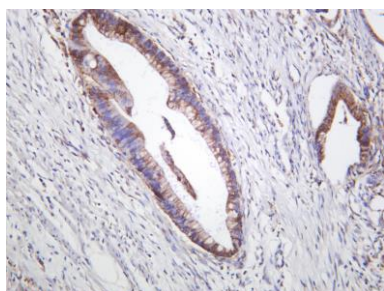
Lane 1: HeLa

Lane 2: MCF7

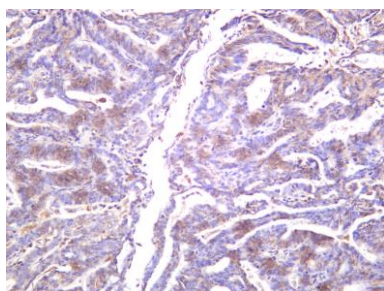
Lane 3: NIH-3T3

Predicted band size: 289kDa

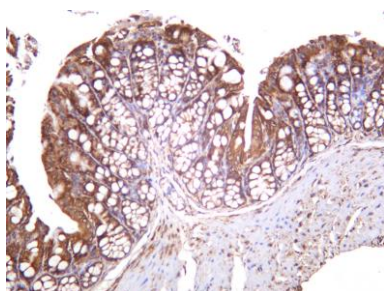
Observed band size: 250kDa



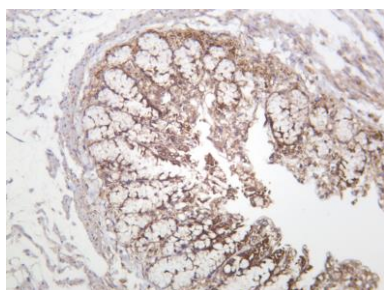
Human colon carcinoma was stained with anti-mTOR (phospho Ser2448) rabbit antibody



Human endometrium carcinoma was stained with anti-mTOR (phospho Ser2448) rabbit antibody



Mouse colon was stained with anti-mTOR (phospho Ser2448) rabbit antibody



Rat colon was stained with anti-mTOR (phospho Ser2448) rabbit antibody