

IKK α Rabbit mAb (AR1270)

Key Features

Host Species:	Rabbit
Reactivity:	Human, Mouse, Rat
Applications:	WB, IHC, IF, IP, ELISA
Isotype:	IgG, Kappa
MW:	85kD (Calculated) 85kD (Observed)

Recommended Dilution Ratios

IHC:	1:100-500
WB:	1:2000-10000
IF:	1:200-1000
ELISA:	1:5000-20000
IP:	1:50-200

Storage

-15°C to -25°C/1 year (Do not lower than -25°C)

Basic Information

Clonality	Monoclonal
-----------	------------

Immunogen Information

Specificity	Endogenous
-------------	------------

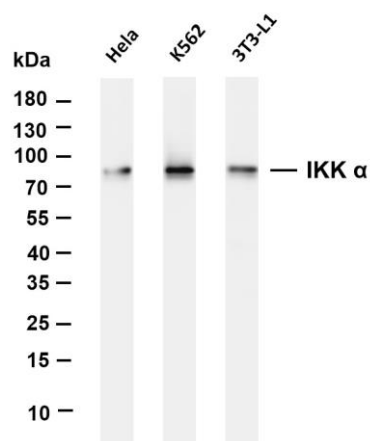
Target Information

Gene name	CHUK
Protein Name	Inhibitor of nuclear factor kappa-B kinase subunit alpha

Organism	Gene ID	UniProt ID
Human	1147	O15111
Mouse		Q60680

Cellular Localization	Cytoplasm, Nucleus
Tissue specificity	Widely expressed.

Validation Data



Various whole cell lysates were separated by 4-20% SDS-PAGE, and the membrane was blotted with anti-IKK α antibody. The HRP-conjugated Goat anti-Rabbit IgG(H + L) antibody was used to detect the antibody.

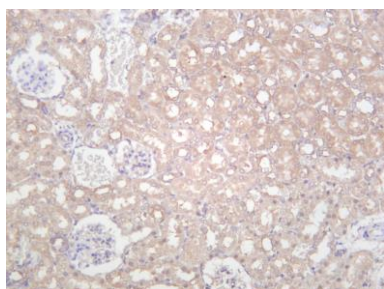
Lane 1: HeLa

Lane 2: K562

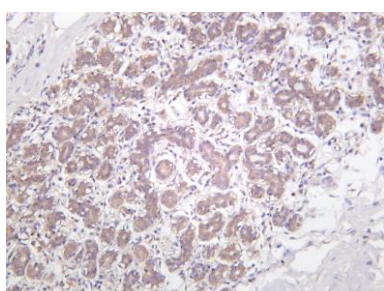
Lane 3: 3T3-L1

Predicted band size: 85kDa

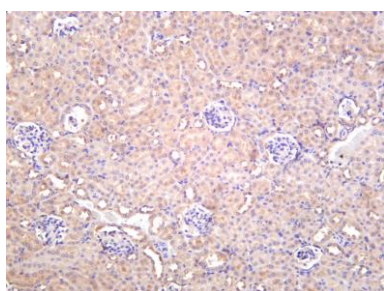
Observed band size: 85kDa



Rat kidney was stained with anti-IKK α rabbit antibody



Human breast carcinoma was stained with anti-IKK α rabbit antibody



Mouse kidney was stained with anti-IKK α rabbit antibody

For Research Use Only