

Histone H3 Rabbit mAb (AR1276)

Key Features

Host Species:	Rabbit
Reactivity:	Human,Mouse,Rat
Applications:	WB,IHC,IF,IP,ELISA
Isotype:	IgG,Kappa
MW:	15kD (Calculated) 15kD (Observed)

Recommended Dilution Ratios

IHC:	1:5000-20000
WB:	1:5000-20000
IF:	1:200-1000
ELISA:	1:5000-20000
IP:	1:50-200

Storage

-15°C to -25°C/1 year (Do not lower than -25°C)

Basic Information

Clonality	Monoclonal
-----------	------------

Immunogen Information

Specificity	Endogenous
-------------	------------

Target Information

Gene name	HIST1H3A
Protein Name	Histone H3.1

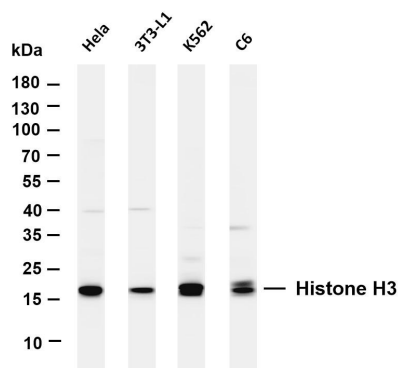
Organism	Gene ID	UniProt ID
Human	8350; 8351; 8352;	P68431
	8353; 8354; 8355;	
	8356; 8357; 8358;	
	8968	
Mouse	319152	P68433
Rat	291159	Q6LED0

Cellular Localization	Nucleus
-----------------------	---------

Tissue specificity

Blood, Epithelium, Kidney, Lung, Ovary, Spleen, Uterus

Validation Data



Various whole cell lysates were separated by 4-20% SDS-PAGE, and the membrane was blotted with anti-Histone H3 antibody. The HRP-conjugated Goat anti-Rabbit IgG (H + L) antibody was used to detect the antibody.

Lane 1: HeLa

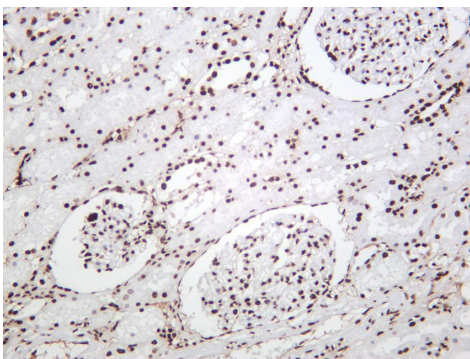
Lane 2: 3T3-L1

Lane 3: K562

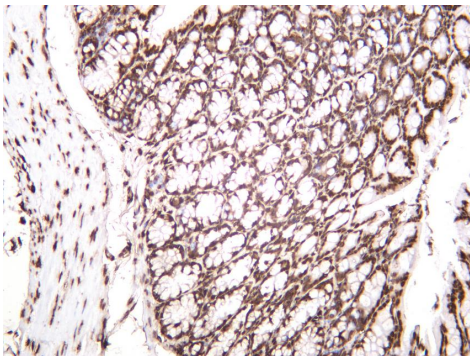
Lane 4: C6

Predicted band size: 15kDa

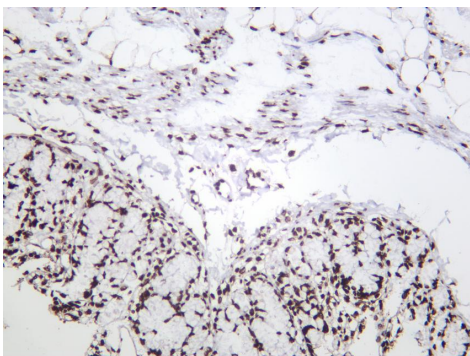
Observed band size: 15kDa



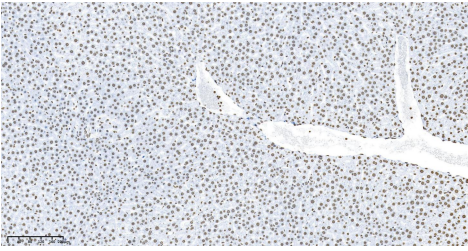
Human kidney was stained with anti-Histone H3 rabbit antibody



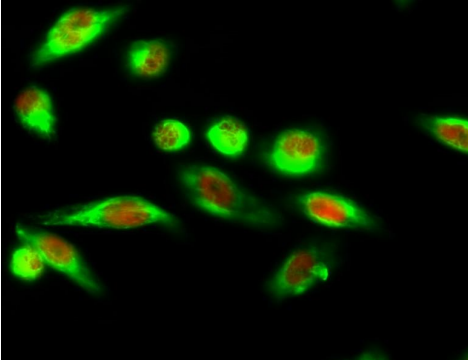
Mouse colon was stained with anti-Histone H3 rabbit antibody



Rat colon was stained with anti-Histone H3 rabbit antibody

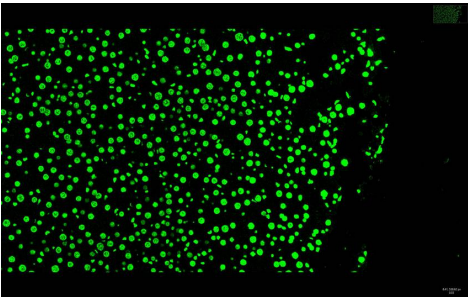


Rat liver was stained with anti-Histone H3 Rabbit antibody



Immunofluorescence analysis of HeLa cell.

1. Histone H3 Antibody(red) was diluted at 1:200(4 ° overnight). LC3A mouse Monoclonal Antibody(5G10)(green) was diluted at 1:200(4° overnight).
2. Goat Anti Rabbit Alexa Fluor 594 was diluted at 1:1000(room temperature, 50min). Goat Anti Mouse Alexa Fluor 488 was diluted at 1:1000(room temperature, 50min).



Rat liver was stained with anti-Histone H3 Rabbit antibody

For Research Use Only