

β Tubulin Rabbit mAb (AR1273)

Key Features

Host Species:	Rabbit
Reactivity:	Human, Mouse, Rat
Applications:	WB, IHC, IF, IP, ELISA
Isotype:	IgG, Kappa
MW:	50kD (Calculated) 50kD (Observed)

Recommended Dilution Ratios

IHC:	1:2000-10000
WB:	1:2000-10000
IF:	1:200-1000
ELISA:	1:5000-20000
IP:	1:50-200

Storage

-15°C to -25°C/1 year (Do not lower than -25°C)

Basic Information

Clonality	Monoclonal
-----------	------------

Immunogen Information

Specificity	Endogenous
-------------	------------

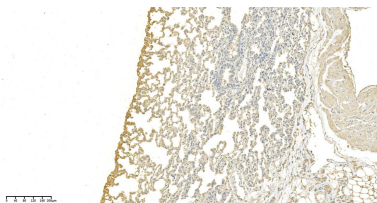
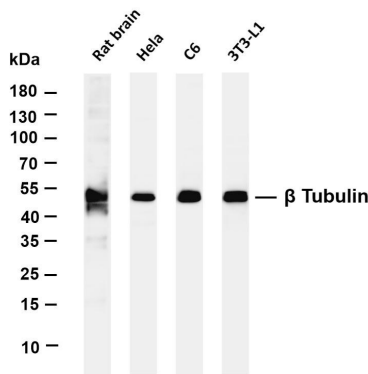
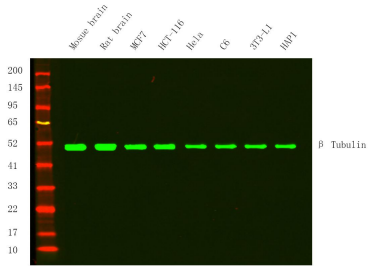
Target Information

Gene name	TUBB
Protein Name	Tubulin beta chain (Tubulin beta-5 chain)

Organism	Gene ID	UniProt ID
Human	203068	P07437
Mouse		P99024
Rat		P69897

Cellular Localization	Cytoplasm
Tissue specificity	Ubiquitously expressed with highest levels in spleen, thymus and immature brain.

Validation Data



Western Blot analysis using Various whole cell lysates were separated by 4-20% SDS-PAGE, and the membrane was blotted with anti- β Tubulin Rabbit mAb diluted at 1:5000. Secondary: Dylight 800, Goat Anti Rabbit IgG(1:10000)

Various whole cell lysates were separated by 4-20% SDS-PAGE, and the membrane was blotted with anti- β Tubulin antibody. The HRP-conjugated Goat anti-Rabbit IgG(H + L) antibody was used to detect the antibody.

Lane 1: Rat brain

Lane 2: HeLa

Lane 3: C6

Lane 4: 3T3-L1

Predicted band size: 50kDa

Observed band size: 50kDa

Rat lung was stained with anti- β Tubulin Rabbit antibody

For Research Use Only