

## ERK1/2 Rabbit mAb (AR1277)

### Key Features

Host Species:	Rabbit
Reactivity:	Human, Mouse, Rat
Applications:	WB, IHC, IF, IP, ELISA
Isotype:	IgG, Kappa
MW:	43kD, 41kD (Calculated) 43kD, 41kD (Observed)

### Recommended Dilution Ratios

IHC:	1:2000-10000
WB:	1:2000-10000
IF:	1:200-1000
ELISA:	1:5000-20000
IP:	1:50-200

### Storage

-15°C to -25°C/1 year (Do not lower than -25°C)

### Basic Information

Clonality	Monoclonal
-----------	------------

### Immunogen Information

Specificity	Endogenous
-------------	------------

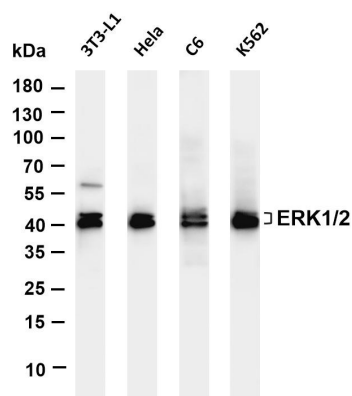
### Target Information

Gene name	MAPK1/MAPK3
Protein Name	Mitogen-activated protein kinase 3

Organism	Gene ID	UniProt ID
Human	5595; 5594	P28482; P27361
Mouse	26417; 26413	
Rat	50689; 116590	P21708; P63086

Cellular Localization	Cytoplasm, Nucleus
Tissue specificity	Epithelium, Eye, Hepatoma, Human cervix, Lymph

## Validation Data



Various whole cell lysates were separated by 4-20% SDS-PAGE, and the membrane was blotted with anti-ERK1/2 antibody. The HRP-conjugated Goat anti-Rabbit IgG(H + L) antibody was used to detect the antibody.

Lane 1: 3T3-L1

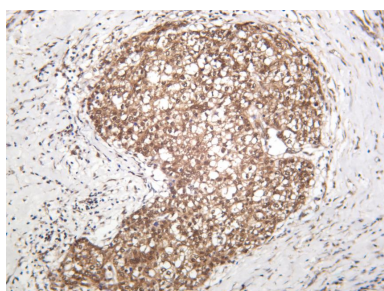
Lane 2: HeLa

Lane 3: C6

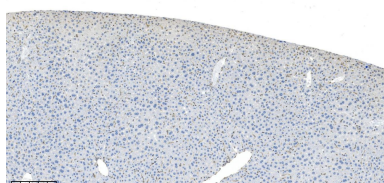
Lane 4: K562

Predicted band size: 43,41kDa

Observed band size: 43,41kDa



Human breast carcinoma was stained with anti-ERK1/2 rabbit antibody



Mouse liver was stained with anti-ERK1/2 Rabbit antibody

For Research Use Only