

HO-1 Rabbit mAb (AR1278)

Key Features

| | |
|---------------|--------------------------------------|
| Host Species: | Rabbit |
| Reactivity: | Human,Mouse,Rat |
| Applications: | WB,IHC,IF,IP,ELISA |
| Isotype: | IgG,Kappa |
| MW: | 33kD (Calculated) 33kD (Observed) |

Recommended Dilution Ratios

| | |
|--------|--------------|
| IHC: | 1:2000-10000 |
| WB: | 1:2000-10000 |
| IF: | 1:200-1000 |
| ELISA: | 1:5000-20000 |
| IP: | 1:50-200 |

Storage

-15°C to -25°C/1 year (Do not lower than -25°C)

Basic Information

| | |
|-----------|------------|
| Clonality | Monoclonal |
|-----------|------------|

Immunogen Information

| | |
|-------------|------------|
| Specificity | Endogenous |
|-------------|------------|

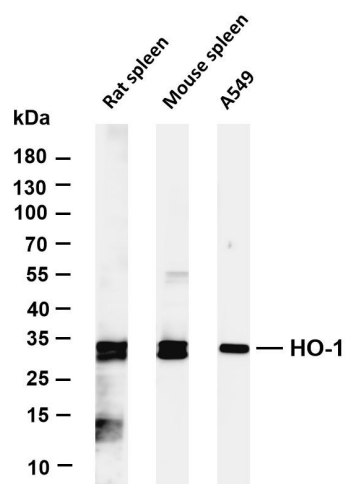
Target Information

| | |
|--------------|--------------|
| Gene name | HMOX1 HO HO1 |
| Protein Name | HO-1 |

| Organism | Gene ID | UniProt ID |
|----------|---------|------------|
| Human | 3162 | P09601 |
| Mouse | 15368 | P14901 |
| Rat | 24451 | P06762 |

| | |
|-----------------------|---|
| Cellular Localization | Endoplasmic reticulum membrane |
| Tissue specificity | Expressed at higher levels in renal cancer tissue than in normal tissue (at protein level). |

Validation Data



Various whole cell lysates were separated by 4-20% SDS-PAGE, and the membrane was blotted with anti-HO-1 antibody. The HRP-conjugated Goat anti-Rabbit IgG(H + L) antibody was used to detect the antibody.

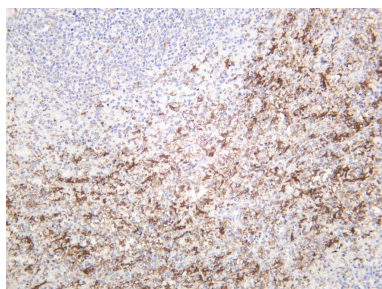
Lane 1: Rat spleen

Lane 2: Mouse spleen

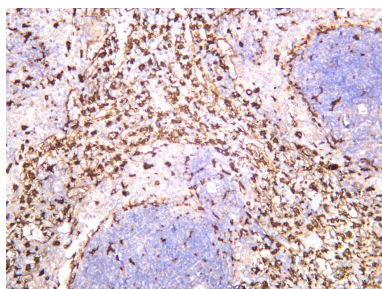
Lane 3: A549

Predicted band size: 33kDa

Observed band size: 33kDa



Human spleen was stained with anti-HO-1 rabbit antibody



Rat spleen was stained with anti-HO-1 rabbit antibody

For Research Use Only