

# Integrin $\beta$ 1 Rabbit mAb (AR1279)

## Key Features

Host Species:	Rabbit
Reactivity:	Human,Mouse,Rat
Applications:	WB,IHC,IF,IP,ELISA
Isotype:	IgG,Kappa
MW:	88kD (Calculated) 115-125kD (Observed)

## Recommended Dilution Ratios

IHC:	1:2000-10000
WB:	1:2000-10000
IF:	1:200-1000
ELISA:	1:5000-20000
IP:	1:50-200

## Storage

-15°C to -25°C/1 year (Do not lower than -25°C)

## Basic Information

Clonality	Monoclonal
-----------	------------

## Immunogen Information

Specificity	Endogenous
-------------	------------

## Target Information

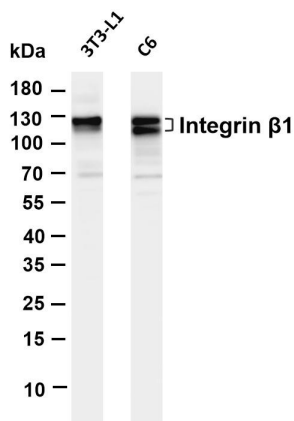
Gene name	ITGB1
Protein Name	Integrin beta-1

Organism	Gene ID	UniProt ID
Human	3688	P05556
Mouse	16412	P09055
Rat	24511	P49134

Cellular Localization	Membrane
Tissue specificity	[Isoform 1]: Widely expressed, other isoforms are generally coexpressed with a more restricted distribution. ; [Isoform 2]:

Expressed in skin, liver, skeletal muscle, cardiac muscle, placenta, umbilical vein endothelial cells, neuroblastoma cells, lymphoma cells, hepatoma cells and astrocytoma cells; [Isoform 3]: Together with isoform 4, is expressed in muscle, kidney, liver, placenta, cervical epithelium, umbilical vein endothelial cells, fibroblast cells, embryonal kidney cells, platelets and several blood cell lines. Expressed in non-proliferating and differentiated prostate gland epithelial cells and in platelets, on the surface of erythroleukemia cells and in various hematopoietic cell lines; [Isoform 4]: Together with isoform 3, is expressed in muscle, kidney, liver, placenta, cervical epithelium, umbilical vein endothelial cells, fibroblast cells, embryonal kidney cells, platelets and several blood cell lines. Rather than isoform 3, is selectively expressed in peripheral T-cells. ; [Isoform 5]: Expressed specifically in striated muscle (skeletal and cardiac muscle).

## Validation Data



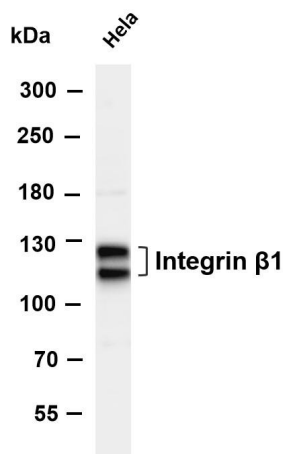
Various whole cell lysates were separated by 4-20% SDS-PAGE, and the membrane was blotted with anti-Integrin  $\beta 1$  antibody. The HRP-conjugated Goat anti-Rabbit IgG (H + L) antibody was used to detect the antibody.

Lane 1: 3T3-L1

Lane 2: C6

Predicted band size: 88kDa

Observed band size: 115-125kDa

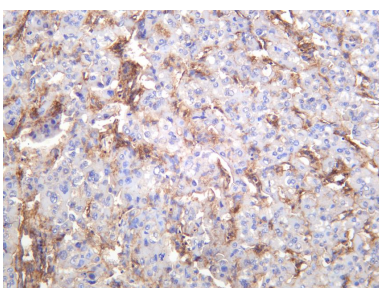


Various whole cell lysates were separated by 4-8% SDS-PAGE, and the membrane was blotted with anti-Integrin  $\beta 1$  antibody. The HRP-conjugated Goat anti-Rabbit IgG(H + L) antibody was used to detect the antibody.

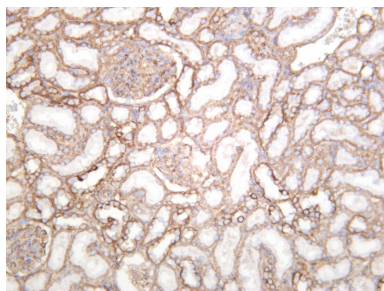
Lane 1: HeLa

Predicted band size: 88kDa

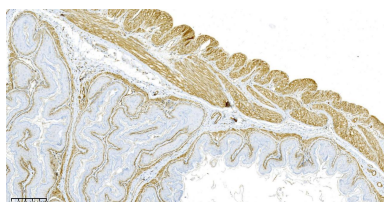
Observed band size: 115-125kDa



Human hepatocellular carcinoma was stained with anti-Integrin  $\beta 1$  rabbit antibody



Rat kidney was stained with anti-Integrin  $\beta$ 1 rabbit antibody



Mouse stomach was stained with anti-Integrin  $\beta$ 1 Rabbit antibody

For Research Use Only