

ATG5 Rabbit mAb (AR1281)

Key Features

Host Species:	Rabbit
Reactivity:	Human, Mouse, Rat
Applications:	WB, IHC, IF, IP, ELISA
Isotype:	IgG, Kappa
MW:	32kD (Calculated) 55kD (Observed)

Recommended Dilution Ratios

IHC:	1:200-1000
WB:	1:2000-10000
IF:	1:200-1000
ELISA:	1:5000-20000
IP:	1:50-200

Storage

-15°C to -25°C/1 year (Do not lower than -25°C)

Basic Information

Clonality	Monoclonal
-----------	------------

Immunogen Information

Specificity	Endogenous
-------------	------------

Target Information

Gene name	ATG5 APG5L ASP
Protein Name	ATG5

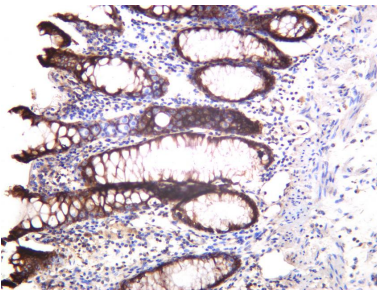
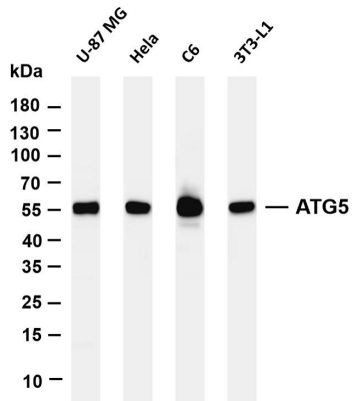
Organism	Gene ID	UniProt ID
Human	9474	Q9H1Y0
Mouse	11793	Q99J83
Rat		Q3MQ06

Cellular Localization	Cytoplasm
-----------------------	-----------

Tissue specificity	Ubiquitous. The mRNA is present at similar levels in viable and apoptotic cells, whereas the protein is dramatically highly
--------------------	---

expressed in apoptotic cells.

Validation Data



Various whole cell lysates were separated by 4-20% SDS-PAGE, and the membrane was blotted with anti-ATG5 antibody. The HRP-conjugated Goat anti-Rabbit IgG(H + L) antibody was used to detect the antibody.

Lane 1: U-87 MG

Lane 2: HeLa

Lane 3: C6

Lane 4: 3T3-L1

Predicted band size: 32kDa

Observed band size: 55kDa

Human colon was stained with anti-ATG5 rabbit antibody

For Research Use Only