

## GFP/eGFP-Tag Rabbit mAb (AR1282)

### Key Features

Host Species:	Rabbit
Reactivity:	Human, Mouse, Rat
Applications:	WB, IF, IP, ELISA
Isotype:	IgG, Kappa
MW:	27kD (Calculated) 27kD (Observed)

### Recommended Dilution Ratios

WB:	1:5000-20000
IF:	1:200-1000
ELISA:	1:5000-20000
IP:	1:50-200

### Storage

-15°C to -25°C/1 year (Do not lower than -25°C)

### Basic Information

Clonality	Monoclonal
-----------	------------

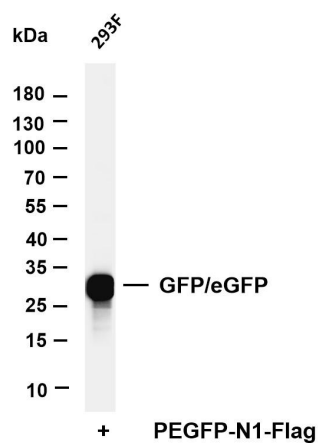
### Immunogen Information

Specificity	The antibody can detect GFP-Tag fusion proteins.
-------------	--

### Target Information

Gene name	GFP-Tag
Protein Name	GFP Tag

## Validation Data



Various whole cell lysates were separated by 4-20% SDS-PAGE, and the membrane was blotted with anti-GFP/eGFP antibody. The HRP-conjugated Goat anti-Rabbit IgG(H + L) antibody was used to detect the antibody.

Lane 1: 293F transfection by EGFP

Predicted band size: 27kDa

Observed band size: 27kDa

For Research Use Only