

# Sumo 1 Rabbit mAb (AR1280)

## Key Features

|               |                                      |
|---------------|--------------------------------------|
| Host Species: | Rabbit                               |
| Reactivity:   | Human, Mouse, Rat                    |
| Applications: | WB, IHC, IF, IP, ELISA               |
| Isotype:      | IgG, Kappa                           |
| MW:           | 12kD (Calculated)<br>80kD (Observed) |

## Recommended Dilution Ratios

|        |              |
|--------|--------------|
| IHC:   | 1:2000-10000 |
| WB:    | 1:2000-10000 |
| IF:    | 1:200-1000   |
| ELISA: | 1:5000-20000 |
| IP:    | 1:50-200     |

## Storage

-15°C to -25°C/1 year (Do not lower than -25°C)

## Basic Information

|           |            |
|-----------|------------|
| Clonality | Monoclonal |
|-----------|------------|

## Immunogen Information

|             |            |
|-------------|------------|
| Specificity | Endogenous |
|-------------|------------|

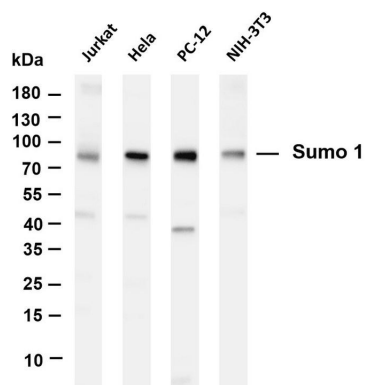
## Target Information

|              |                                    |
|--------------|------------------------------------|
| Gene name    | SUMO1                              |
| Protein Name | Small ubiquitin-related modifier 1 |

| Organism | Gene ID | UniProt ID |
|----------|---------|------------|
| Human    | 7341    | P63165     |
| Mouse    | 22218   | P63166     |
| Rat      | 301442  | Q5I0H3     |

|                       |   |
|-----------------------|---|
| Cellular Localization | Cytoplasm, Nucleus                                |
| Tissue specificity    | Brain, Colon adenocarcinoma, Epithelium, Placenta |

## Validation Data



Various whole cell lysates were separated by 4-20% SDS-PAGE, and the membrane was blotted with anti-Sumo 1 antibody. The HRP-conjugated Goat anti-Rabbit IgG(H + L) antibody was used to detect the antibody.

Lane 1: Jurkat

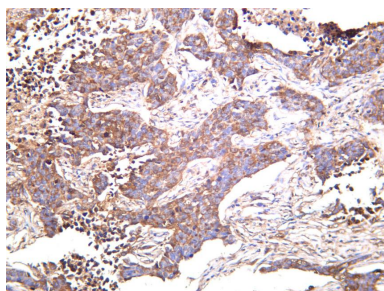
Lane 2: HeLa

Lane 3: PC-12

Lane 4: NIH-3T3

Predicted band size: 12kDa

Observed band size: 80kDa



Human lung carcinoma was stained with anti-Sumo 1 rabbit antibody

For Research Use Only