

## CREB-1 Rabbit mAb (AR1283)

### Key Features

Host Species:	Rabbit
Reactivity:	Human, Mouse, Rat
Applications:	WB, IHC, IF, IP, ELISA
Isotype:	IgG, Kappa
MW:	35kD (Calculated) 40kD (Observed)

### Recommended Dilution Ratios

IHC:	1:2000-10000
WB:	1:2000-10000
IF:	1:200-1000
ELISA:	1:5000-20000
IP:	1:50-200

### Storage

-15°C to -25°C/1 year (Do not lower than -25°C)

### Basic Information

Clonality	Monoclonal
-----------	------------

### Immunogen Information

Specificity	Endogenous
-------------	------------

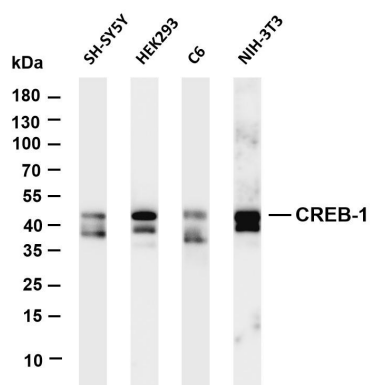
### Target Information

Gene name	CREB1
Protein Name	Cyclic AMP-responsive element-binding protein 1

Organism	Gene ID	UniProt ID
Human	1385	P16220
Mouse	12912	Q01147
Rat	81646	P15337

Cellular Localization	Nucleus
Tissue specificity	Eye, Placenta, Spleen, Testis

## Validation Data



Various whole cell lysates were separated by 4-20% SDS-PAGE, and the membrane was blotted with anti-CREB-1 antibody. The HRP-conjugated Goat anti-Rabbit IgG(H + L) antibody was used to detect the antibody.

Lane 1: SHSY5Y

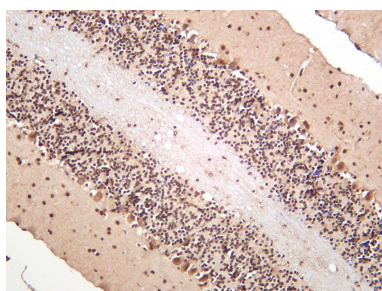
Lane 2: HEK293

Lane 3: C6

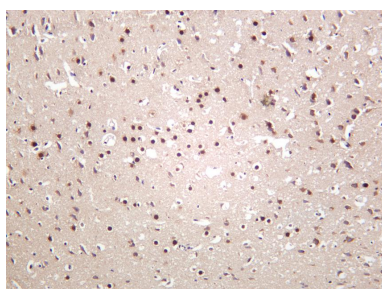
Lane 4: NIH-3T3

Predicted band size: 35kDa

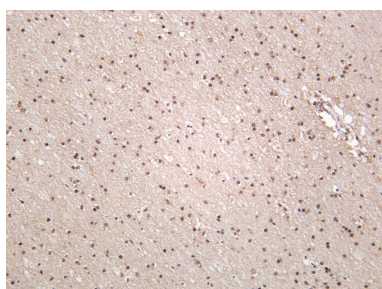
Observed band size: 43kDa



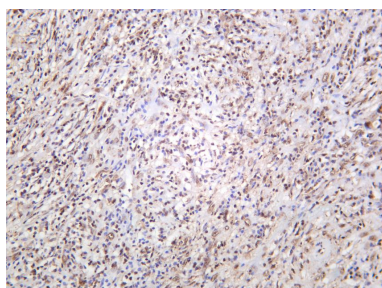
Mouse brain was stained with anti-CREB rabbit antibody



Rat brain was stained with anti-CREB rabbit antibody



Human brain was stained with anti-CREB rabbit antibody



Human thyroid carcinoma was stained with anti-CREB rabbit antibody