

## VEGFA Rabbit mAb (AR1285)

### Key Features

Host Species:	Rabbit
Reactivity:	Human, Mouse, Rat
Applications:	WB, IHC, IF, IP, ELISA
Isotype:	IgG, Kappa
MW:	43kD (Human, Mouse); 27kD (Rat) (Calculated) 40kD (Observed)

### Recommended Dilution Ratios

IHC:	1:1000-5000
WB:	1:2000-10000
IF:	1:200-1000
ELISA:	1:5000-20000
IP:	1:50-200

### Storage

-15°C to -25°C/1 year (Do not lower than -25°C)

### Basic Information

Clonality	Monoclonal
-----------	------------

### Immunogen Information

Specificity	Endogenous
-------------	------------

### Target Information

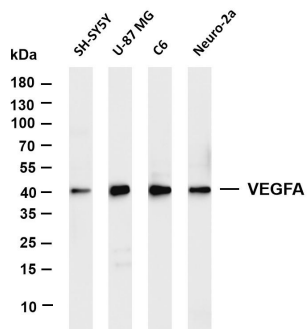
Gene name	VEGFA
Protein Name	Vascular endothelial growth factor A

Organism	Gene ID	UniProt ID
Human	7422	P15692
Mouse	22339	Q00731
Rat	83785	P16612

Cellular Localization	Secreted
Tissue specificity	Isoform VEGF189, isoform VEGF165 and isoform VEGF121 are widely expressed. Isoform VEGF206 and isoform VEGF145 are not

widely expressed. A higher level expression seen in pituitary tumors as compared to the pituitary gland.

## Validation Data



Various whole cell lysates were separated by 4-20% SDS-PAGE, and the membrane was blotted with anti-VEGFA antibody. The HRP-conjugated Goat anti-Rabbit IgG(H + L) antibody was used to detect the antibody.

Lane 1: SH SY5Y

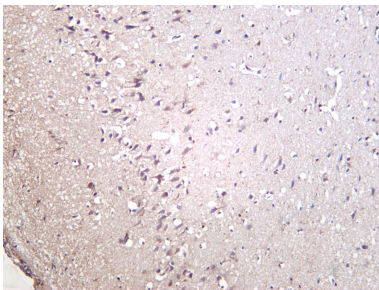
Lane 2: U-87 MG

Lane 3: C6

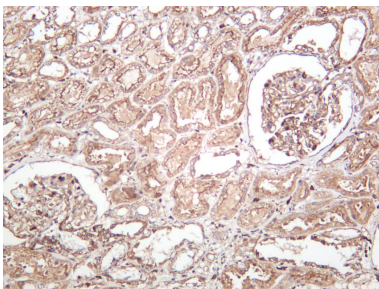
Lane 4: Neuro-2a

Predicted band size: 43kDa

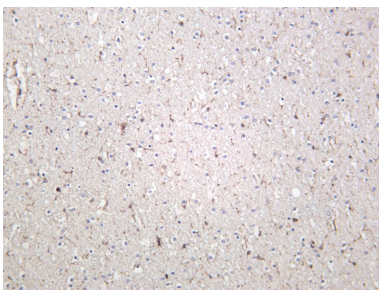
Observed band size: 40kDa



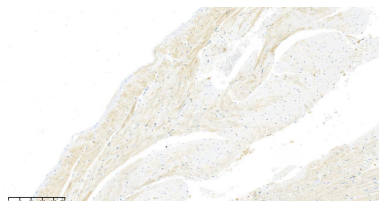
Rat brain was stained with anti-VEGFA rabbit antibody



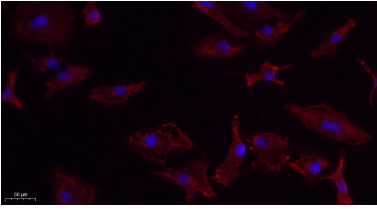
Human kidney was stained with anti-VEGFA rabbit antibody



Mouse brain was stained with anti-VEGFA rabbit antibody



Rat heart was stained with anti-VEGFA Rabbit antibody



Immunofluorescence analysis of A549.

1. primary Antibody(red) was diluted at 1:200(4°C overnight).
2. Goat Anti Rabbit IgG (H&L) - Alexa Fluor 594 Secondary antibody was diluted at 1:1000(room temperature, 50min).
3. DAPI (blue) 10min.

For Research Use Only