

HA-Tag Rabbit mAb (AR1286)

Key Features

Host Species:	Rabbit
Reactivity:	Human, Mouse, Rat
Applications:	WB, IF, IP, ELISA
Isotype:	IgG, Kappa
MW:	50kD (Calculated) 55kD (Observed)

Recommended Dilution Ratios

WB:	1:2000-10000
IF:	1:200-1000
ELISA:	1:5000-20000
IP:	1:50-200

Storage

-15°C to -25°C/1 year (Do not lower than -25°C)

Basic Information

Clonality	Monoclonal
-----------	------------

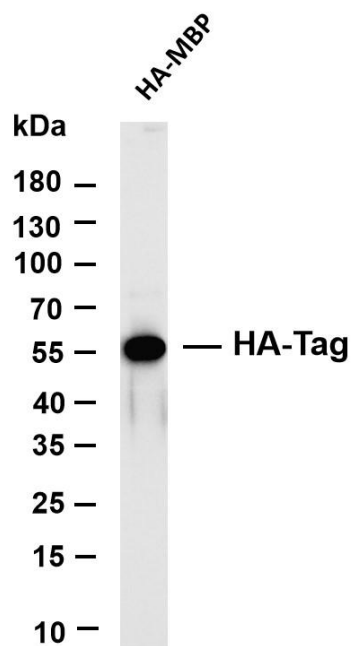
Immunogen Information

Specificity	The antibody can detect HA-Tag fusion proteins.
-------------	---

Target Information

Gene name	HA Tag
Protein Name	HA-Tag

Validation Data



Various whole cell lysates were separated by 4-20% SDS-PAGE, and the membrane was blotted with anti-HA-Tag antibody. The HRP-conjugated Goat anti-Rabbit IgG(H + L) antibody was used to detect the antibody.

Lane 1: HAMBP(BL21)

Predicted band size: 50kDa

Observed band size: 55kDa

For Research Use Only