

RUNX2 Rabbit mAb (AR1287)

Key Features

Host Species:	Rabbit
Reactivity:	Human, Mouse, Rat
Applications:	WB, IHC, IF, IP, ELISA
Isotype:	IgG, Kappa
MW:	57kD (Calculated) 57kD (Observed)

Recommended Dilution Ratios

IHC:	11000-5000
WB:	1:2000-10000
IF:	1:200-1000
ELISA:	1:5000-20000
IP:	1:50-200

Storage

-15°C to -25°C/1 year (Do not lower than -25°C)

Basic Information

Clonality	Monoclonal
-----------	------------

Immunogen Information

Specificity	Endogenous
-------------	------------

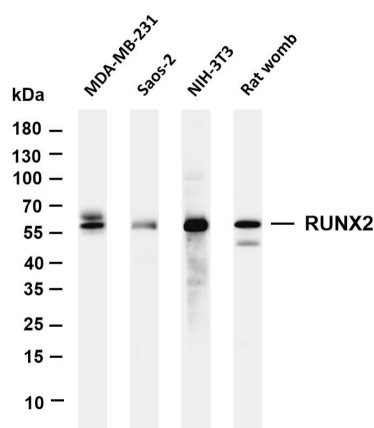
Target Information

Gene name	RUNX2
Protein Name	Runt-related transcription factor 2

Organism	Gene ID	UniProt ID
Human	860	Q13950
Mouse	12393	Q08775
Rat		Q9Z2J9

Cellular Localization	Nucleus
Tissue specificity	Specifically expressed in osteoblasts.

Validation Data



Various whole cell lysates were separated by 4-20% SDS-PAGE, and the membrane was blotted with anti-RUNX2 antibody. The HRP-conjugated Goat anti-Rabbit IgG(H + L) antibody was used to detect the antibody.

Lane 1: MDA-MB-231

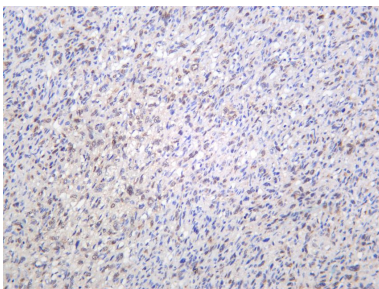
Lane 2: Saos-2

Lane 3: NIH-3T3

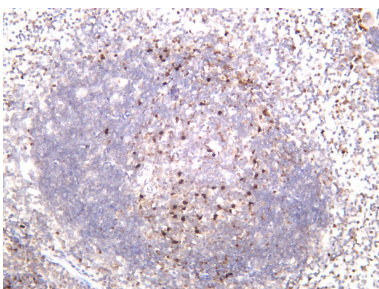
Lane 4: Rat womb

Predicted band size: 57kDa

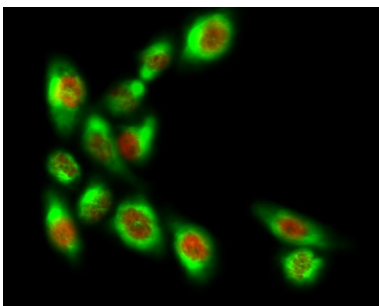
Observed band size: 57kDa



Human osteosarcoma was stained with anti-RUNX2 rabbit antibody



Mouse spleen was stained with anti-RUNX2 rabbit antibody



Immunofluorescence analysis of HeLa cell.

1. RUNX2 Antibody(red) was diluted at 1:200(4 ° overnight). NSE Monoclonal Antibody(13E2)(green) was diluted at 1:200(4 ° overnight).
2. Goat Anti Rabbit Alexa Fluor 594 was diluted at 1:1000(room temperature, 50min). Goat Anti Mouse Alexa Fluor 488 was diluted at 1:1000(room temperature, 50min).

For Research Use Only