

## EGFR Rabbit mAb (AR1284)

### Key Features

Host Species:	Rabbit
Reactivity:	Human, Mouse, Rat
Applications:	WB, IHC, IF, IP, ELISA
Isotype:	IgG, Kappa
MW:	134kD (Calculated) 175kD (Observed)

### Recommended Dilution Ratios

IHC:	1:200-1000
WB:	1:2000-10000
IF:	1:200-1000
ELISA:	1:5000-20000
IP:	1:50-200

### Storage

-15°C to -25°C/1 year (Do not lower than -25°C)

### Basic Information

Clonality	Monoclonal
-----------	------------

### Immunogen Information

Specificity	Endogenous
-------------	------------

### Target Information

Gene name	EGFR ERBB ERBB1 HER1
Protein Name	Epidermal growth factor receptor

Organism	Gene ID	UniProt ID
Human	1956	P00533
Mouse	13649	Q01279

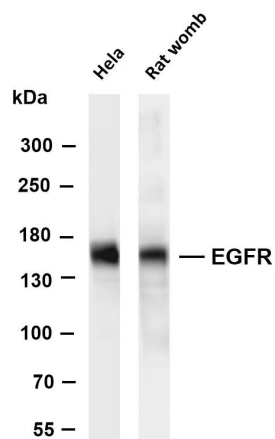
Cellular Localization	Cell membrane; Single-pass type I membrane protein. Endoplasmic reticulum membrane; Single-pass type I membrane protein. Golgi apparatus membrane; Single-pass type I membrane protein. Nucleus membrane; Single-pass type I membrane protein. Endosome. Endosome membrane. Nucleus. In response to EGF,
-----------------------	--

translocated from the cell membrane to the nucleus via Golgi and ER. Endocytosed upon activation by ligand. Colocalized with GPER1 in the nucleus of estrogen agonist-induced cancer-associated fibroblasts (CAF); [Isoform 2]: Secreted.

Ubiquitously expressed. Isoform 2 is also expressed in ovarian cancers.

Tissue specificity

## Validation Data



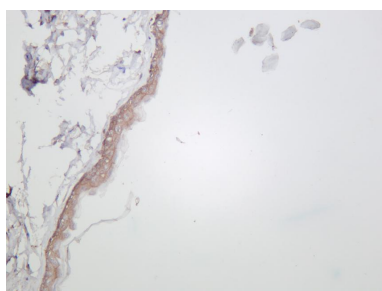
Various whole cell lysates were separated by 4-8% SDS-PAGE, and the membrane was blotted with anti-EGFR antibody. The HRP-conjugated Goat anti-Rabbit IgG(H + L) antibody was used to detect the antibody.

Lane 1: HeLa

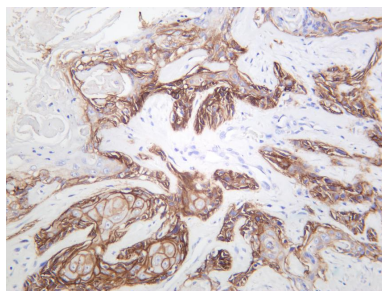
Lane 2: Rat womb

Predicted band size: 134kDa

Observed band size: 175kDa



Mouse skin was stained with anti-EGFR rabbit antibody



Human cutaneous squamous cell carcinoma was stained with anti-EGFR rabbit antibody

For Research Use Only