

CD10 Rabbit mAb (AR1288)

Key Features

Host Species:	Rabbit
Reactivity:	Human, Mouse, Rat
Applications:	WB, IHC, IF, IP, ELISA
Isotype:	IgG, Kappa
MW:	86kD (Calculated) 100kD (Observed)

Recommended Dilution Ratios

IHC:	1:1000-4000
WB:	1:2000-10000
IF:	1:200-1000
ELISA:	1:5000-20000
IP:	1:50-200

Storage

-15°C to -25°C/1 year (Do not lower than -25°C)

Basic Information

Clonality	Monoclonal
-----------	------------

Immunogen Information

Specificity	Endogenous
-------------	------------

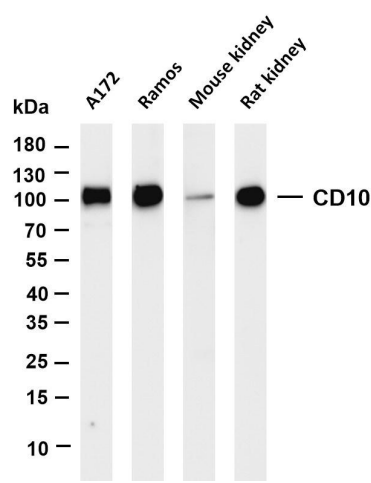
Target Information

Gene name	MME
Protein Name	Neprilysin

Organism	Gene ID	UniProt ID
Human	4311	P08473
Mouse	17380	Q61391
Rat	24590	P07861

Cellular Localization	Membrane
Tissue specificity	Adrenal cortex, Brain, Kidney, Placenta

Validation Data



Various whole cell lysates were separated by 4-20% SDS-PAGE, and the membrane was blotted with anti-CD10 antibody. The HRP-conjugated Goat anti-Rabbit IgG(H + L) antibody was used to detect the antibody.

Lane 1: A172

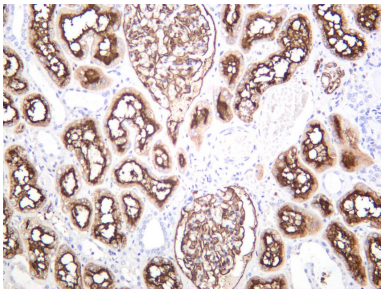
Lane 2: Ramos

Lane 3: Mouse kidney

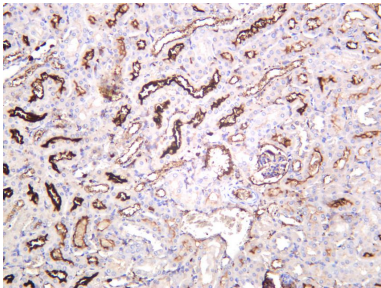
Lane 4: Rat kidney

Predicted band size: 86kDa

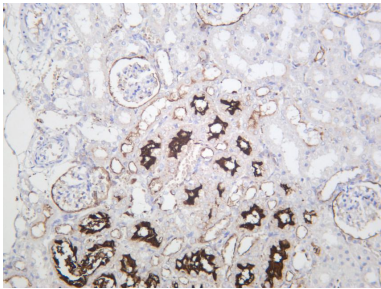
Observed band size: 100kDa



Human kidney was stained with anti-CD10 rabbit antibody



Mouse kidney was stained with anti-CD10 rabbit antibody



Rat kidney was stained with anti-CD10 rabbit antibody