

## MMP7 Rabbit mAb (AR1289)

### Key Features

|               |                                      |
|---------------|--------------------------------------|
| Host Species: | Rabbit                               |
| Reactivity:   | Human                                |
| Applications: | WB,IHC,IF,IP,ELISA                   |
| Isotype:      | IgG,Kappa                            |
| MW:           | 30kD (Calculated)<br>30kD (Observed) |

### Recommended Dilution Ratios

|        |              |
|--------|--------------|
| IHC:   | 1:200-1000   |
| WB:    | 1:2000-10000 |
| IF:    | 1:200-1000   |
| ELISA: | 1:5000-20000 |
| IP:    | 1:50-200     |

### Storage

-15°C to -25°C/1 year (Do not lower than -25°C)

### Basic Information

|           |            |
|-----------|------------|
| Clonality | Monoclonal |
|-----------|------------|

### Immunogen Information

|             |            |
|-------------|------------|
| Specificity | Endogenous |
|-------------|------------|

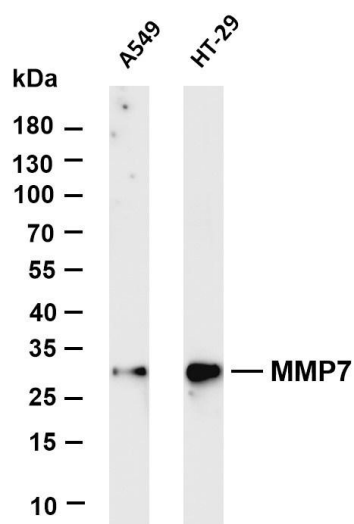
### Target Information

|              |            |
|--------------|------------|
| Gene name    | MMP7       |
| Protein Name | Matrilysin |

| Organism | Gene ID | UniProt ID |
|----------|---------|------------|
| Human    | 4316    | P09237     |
| Mouse    |         | Q10738     |
| Rat      | 25335   | P50280     |

|                       |  |
|-----------------------|--|
| Cellular Localization | Secreted                                       |
| Tissue specificity    | Colon, Human small intestine, Kidney, Placenta |

## Validation Data



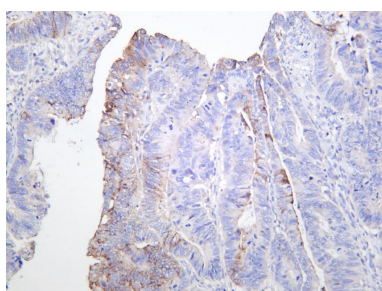
Various whole cell lysates were separated by 4-20% SDS-PAGE, and the membrane was blotted with anti-MMP7 antibody. The HRP-conjugated Goat anti-Rabbit IgG(H + L) antibody was used to detect the antibody.

Lane 1: A549

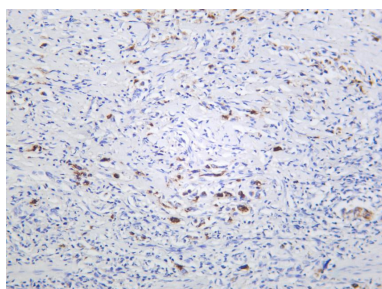
Lane 2: HT-29

Predicted band size: 30kDa

Observed band size: 30kDa



Human colon carcinoma was stained with anti-MMP7 rabbit antibody



Human gastric carcinoma was stained with anti-MMP7 rabbit antibody

For Research Use Only