

## ABL1 Rabbit mAb (AR1290)

### Key Features

Host Species:	Rabbit
Reactivity:	Human
Applications:	WB,IHC,IF,IP,ELISA
Isotype:	IgG,Kappa
MW:	123kD (Calculated) 123kD (Observed)

### Recommended Dilution Ratios

IHC:	1:200-1000
WB:	1:2000-10000
IF:	1:200-1000
ELISA:	1:5000-20000
IP:	1:50-200

### Storage

-15°C to -25°C/1 year (Do not lower than -25°C)

### Basic Information

Clonality	Monoclonal
-----------	------------

### Immunogen Information

Specificity	Endogenous
-------------	------------

### Target Information

Gene name	ABL1 ABL JTK7
Protein Name	Tyrosine-protein kinase ABL1; Proto-oncogene c-Abl

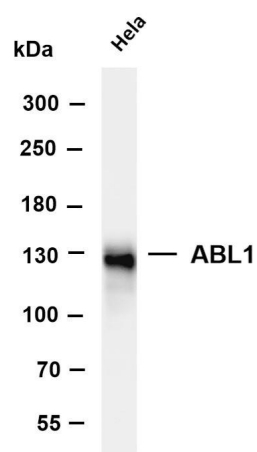
Organism	Gene ID	UniProt ID
Human	25	P00519
Mouse	11350	P00520
Rat	311860	

Cellular Localization	Cytoplasm > cytoskeleton. Nucleus. Sequestered into the cytoplasm through interaction with 14-3-3 proteins and Nucleus membrane. The myristoylated c-ABL protein is reported to be nuclear.
-----------------------	---

Tissue specificity

Widely expressed.

## Validation Data



Various whole cell lysates were separated by 4-8% SDS-PAGE, and the membrane was blotted with anti-ABL1 antibody. The HRP-conjugated Goat anti-Rabbit IgG(H + L) antibody was used to detect the antibody.

Lane 1: HeLa

Predicted band size: 123kDa

Observed band size: 123kDa

For Research Use Only