

CD43 Rabbit mAb (AR1291)

Key Features

Host Species:	Rabbit
Reactivity:	Human
Applications:	WB,IHC,IF,IP,ELISA
Isotype:	IgG,Kappa
MW:	40kD (Calculated) 130kD (Observed)

Recommended Dilution Ratios

IHC:	1:200-1000
WB:	1:2000-10000
IF:	1:200-1000
ELISA:	1:5000-20000
IP:	1:50-200

Storage

-15°C to -25°C/1 year (Do not lower than -25°C)

Basic Information

Clonality	Monoclonal
-----------	------------

Immunogen Information

Specificity	Endogenous
-------------	------------

Target Information

Gene name	SPN CD43
Protein Name	Leukosialin (GPL115) (Galactoglycoprotein) (GALGP) (Leukocyte sialoglycoprotein) (Sialophorin) (CD antigen CD43) [Cleaved into: CD43 cytoplasmic tail (CD43-ct) (CD43ct)]

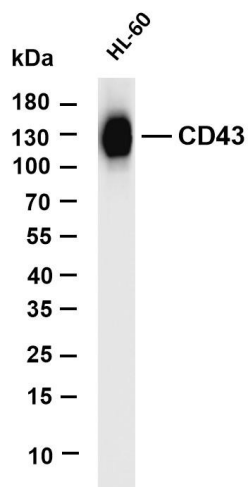
Organism	Gene ID	UniProt ID
Human	6693	P16150
Mouse	20737	P15702
Rat		P13838

Cellular Localization	Membrane
-----------------------	----------

Tissue specificity

Cell surface of thymocytes, T-lymphocytes, neutrophils, plasma cells and myelomas.

Validation Data

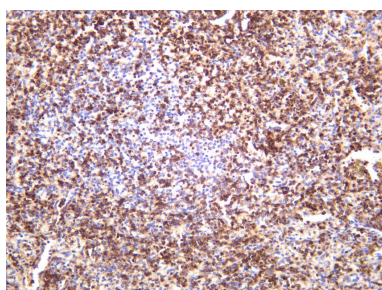


Various whole cell lysates were separated by 4-20% SDS-PAGE, and the membrane was blotted with anti-CD43 antibody. The HRP-conjugated Goat anti-Rabbit IgG(H + L) antibody was used to detect the antibody.

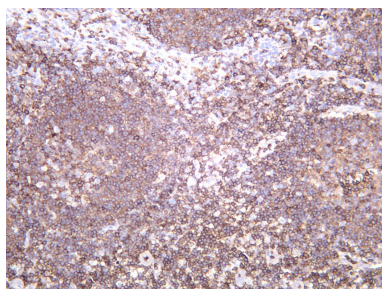
Lane 1: HL-60

Predicted band size: 40kDa

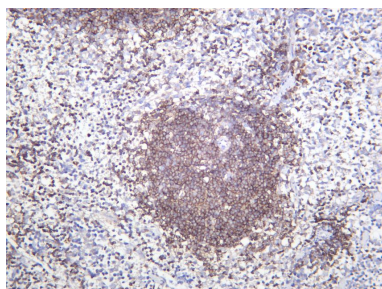
Observed band size: 130kDa



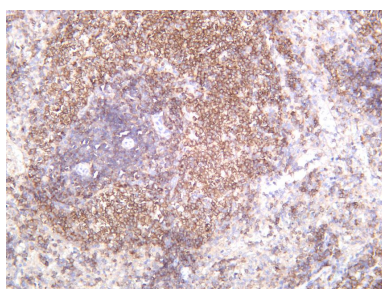
Human spleen was stained with anti-CD43 rabbit antibody



Human tonsil was stained with anti-CD43 rabbit antibody



Mouse spleen was stained with anti-CD43 rabbit antibody



Rat spleen was stained with anti-CD43 rabbit antibody