

## CD14 Rabbit mAb (AR1292)

### Key Features

Host Species:	Rabbit
Reactivity:	Human, Mouse
Applications:	WB, IHC, IF, IP, ELISA
Isotype:	IgG, Kappa
MW:	40kD (Calculated) 52kD (Observed)

### Recommended Dilution Ratios

IHC:	1:400-1000
WB:	1:1000-5000
IF:	1:200-1000
ELISA:	1:5000-20000
IP:	1:50-200

### Storage

-15°C to -25°C/1 year (Do not lower than -25°C)

### Basic Information

Clonality	Monoclonal
-----------	------------

### Immunogen Information

Specificity	Endogenous
-------------	------------

### Target Information

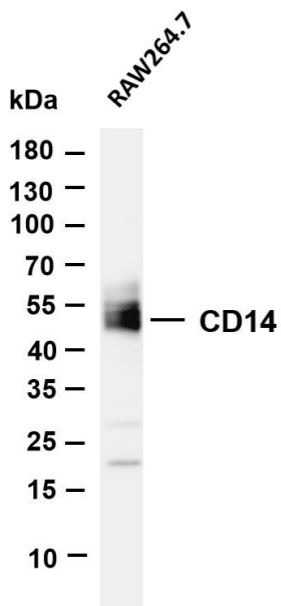
Gene name	CD14
Protein Name	CD14

Organism	Gene ID	UniProt ID
Human	929	P08571
Mouse	12475	P10810
Rat	60350	Q63691

Cellular Localization	Membrane
Tissue specificity	Detected on macrophages (at protein level). Expressed strongly on the surface of monocytes and weakly on the surface of

granulocytes; also expressed by most tissue macrophages.

## Validation Data

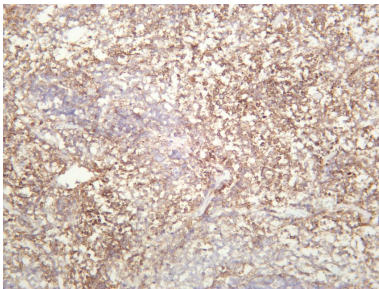


Various whole cell lysates were separated by 4-20% SDS-PAGE, and the membrane was blotted with anti-CD14 antibody. The HRP-conjugated Goat anti-Rabbit IgG(H + L) antibody was used to detect the antibody.

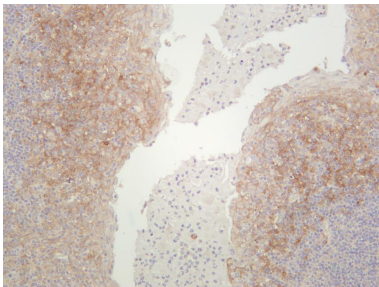
Lane 1: RAW264.7

Predicted band size: 40kDa

Observed band size: 52kDa



Mouse spleen was stained with anti-CD14 rabbit antibody



Human tonsil was stained with anti-CD14 rabbit antibody

For Research Use Only