

Smad2 Rabbit mAb (AR1293)

Key Features

Host Species:	Rabbit
Reactivity:	Human,Mouse,Rat
Applications:	WB,IHC,IF,IP,ELISA
Isotype:	IgG,Kappa
MW:	52kD (Calculated) 58kD (Observed)

Recommended Dilution Ratios

IHC:	1:100-500
WB:	1:1000-5000
IF:	1:200-1000
ELISA:	1:5000-20000
IP:	1:50-200

Storage

-15°C to -25°C/1 year (Do not lower than -25°C)

Basic Information

Clonality	Monoclonal
-----------	------------

Immunogen Information

Specificity	This antibody detects endogenous levels of Smad2 only when phosphorylated at Ser250.This antibody does not recognize phosphorylated at other sites.
-------------	-----------------------------------------------------------------------------------------------------------------------------------------------------

Target Information

Gene name	SMAD2
Protein Name	Mothers against decapentaplegic homolog 2

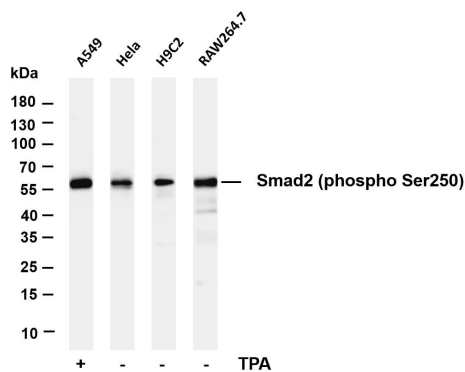
Organism	Gene ID	UniProt ID
Human	4087	Q15796
Mouse	17126	Q62432
Rat	29357	O70436

Cellular Localization	Cytoplasm,Nuclear
-----------------------	-------------------

Tissue specificity

Expressed at high levels in skeletal muscle, endothelial cells, heart and placenta.

Validation Data



Various whole cell lysates were separated by 4-20% SDS-PAGE, and the membrane was blotted with anti-Smad2 (phospho Ser250) antibody. The HRP-conjugated Goat anti-Rabbit IgG(H + L) antibody was used to detect the antibody.

Lane 1: A549 treated with TPA for 48 hours

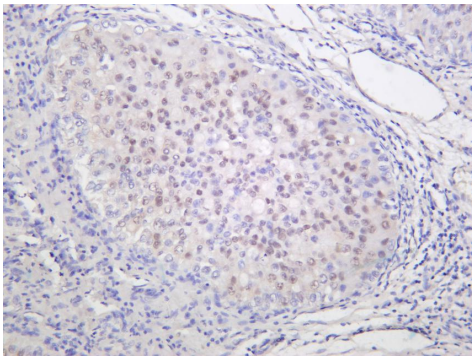
Lane 2: Hela

Lane 3: H9C2

Lane 4: RAW264.7

Predicted band size: 52kDa

Observed band size: 58kDa



Human hepatocellular carcinoma was stained with anti-Smad2 (phosphoSer250) rabbit antibody

For Research Use Only