

4E-BP1 Rabbit mAb (AR1298)

Key Features

Host Species:	Rabbit
Reactivity:	Human, Mouse, Rat
Applications:	WB, IHC, IF, IP, ELISA
Isotype:	IgG, Kappa
MW:	13kD (Calculated) 17kD (Observed)

Recommended Dilution Ratios

IHC:	1:200-1000
WB:	1:2000-10000
IF:	1:200-1000
ELISA:	1:5000-20000
IP:	1:50-200

Storage

-15°C to -25°C/1 year (Do not lower than -25°C)

Basic Information

Clonality	Monoclonal
-----------	------------

Immunogen Information

Specificity	Endogenous
-------------	------------

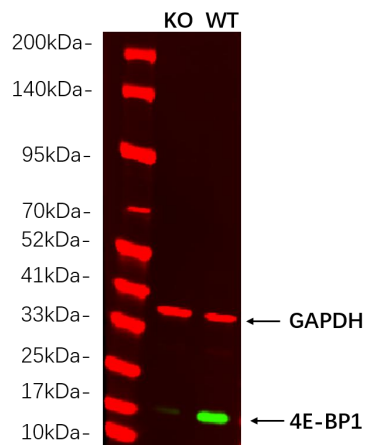
Target Information

Gene name	EIF4EBP1
Protein Name	Eukaryotic translation initiation factor 4E-binding protein 1

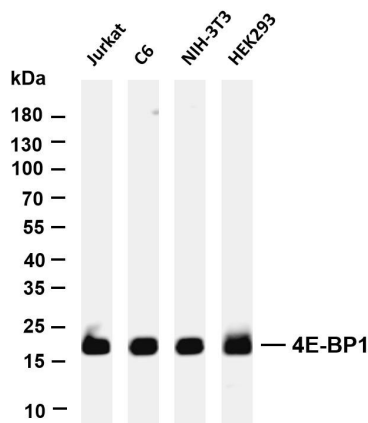
Organism	Gene ID	UniProt ID
Human	1978	Q13541
Mouse	13685	Q60876
Rat	116636	Q62622

Cellular Localization	Nucleus
Tissue specificity	Colon, Epithelium, Lung, Placenta, Platelet

Validation Data



Western blot analysis of lysates from HAP1 WT and knockout cell. (Green) primary antibody was diluted at 1:5000, 4° overnight, Dylight 800 secondary antibody was diluted at 1:10000, 37° 1 hour. (Red) GAPDH Monoclonal Antibody(5B7) antibody was diluted at 1:5000 as loading control, 4° overnight, Dylight 680 secondary antibody was diluted at 1:10000, 37° 1 hour.



Various whole cell lysates were separated by 4-20% SDS-PAGE, and the membrane was blotted with anti-4E-BP1 antibody. The HRP-conjugated Goat anti-Rabbit IgG(H + L) antibody was used to detect the antibody.

Lane 1: Jurkat

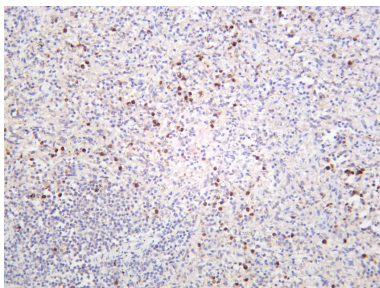
Lane 2: C6

Lane 3: NIH-3T3

Lane 4: HEK293

Predicted band size: 13kDa

Observed band size: 17kDa



Human spleen was stained with anti-4E-BP1 rabbit antibody

For Research Use Only