

# ATG16L1 Rabbit mAb (AR1406)

## Key Features

Host Species:	Rabbit
Reactivity:	Human, Mouse, Rat
Applications:	WB, IHC, IF, IP, ELISA
Isotype:	IgG, Kappa
MW:	68kD (Calculated) 68kD (Observed)

## Recommended Dilution Ratios

IHC:	1:200-1000
WB:	1:2000-10000
IF:	1:200-1000
ELISA:	1:5000-20000
IP:	1:50-200

## Storage

-15°C to -25°C/1 year (Do not lower than -25°C)

## Basic Information

Clonality	Monoclonal
-----------	------------

## Immunogen Information

Specificity	Endogenous
-------------	------------

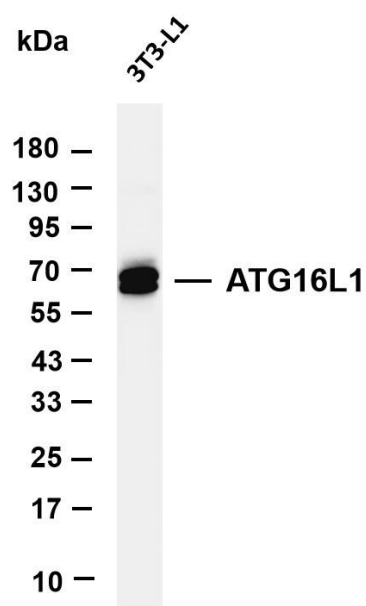
## Target Information

Gene name	ATG16L1
Protein Name	Autophagy-related protein 16-1

Organism	Gene ID	UniProt ID
Human	55054	Q676U5
Mouse		Q8C0J2

Cellular Localization	Cytoplasm
Tissue specificity	Brain, Colon, Epithelium, Fetal brain, Human lung, Mammary gland, Placenta, Small

## Validation Data

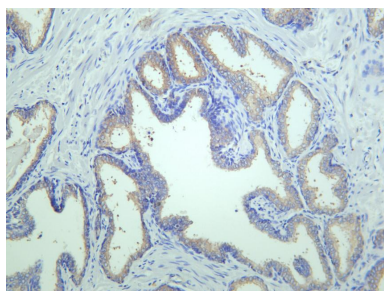


Various whole cell lysates were separated by 4-20% SDS-PAGE, and the membrane was blotted with anti-ATG16L1 antibody. The HRP-conjugated Goat anti-Rabbit IgG(H + L) antibody was used to detect the antibody.

Lane 1: 3T3-L1

Predicted band size: 68kDa

Observed band size: 68kDa



Human prostate was stained with anti-ATG16L1 rabbit antibody

For Research Use Only