

ATM Rabbit mAb (AR1408)

Key Features

Host Species:	Rabbit
Reactivity:	Human, Mouse, Rat
Applications:	WB, IF, IP, ELISA
Isotype:	IgG, Kappa
MW:	351kD (Calculated) 351kD (Observed)

Recommended Dilution Ratios

WB:	1:2000-10000
IF:	1:200-1000
ELISA:	1:5000-20000
IP:	1:50-200

Storage

-15°C to -25°C/1 year (Do not lower than -25°C)

Basic Information

Clonality	Monoclonal
-----------	------------

Immunogen Information

Specificity	Endogenous
-------------	------------

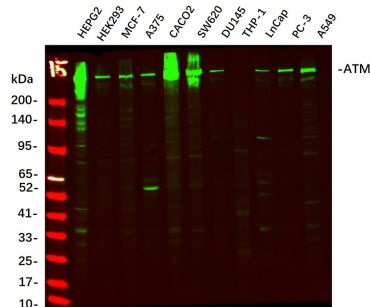
Target Information

Gene name	ATM
Protein Name	Serine-protein kinase ATM

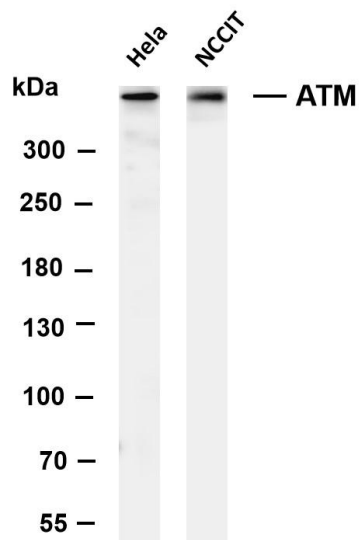
Organism	Gene ID	UniProt ID
Human	472	Q13315
Mouse	11920	Q62388

Cellular Localization	Nucleus. Cytoplasmic vesicle. Cytoplasm, cytoskeleton, microtubule organizing center, centrosome. Primarily nuclear. Found also in endocytic vesicles in association with beta adaptin.
Tissue specificity	Found in pancreas, kidney, skeletal muscle, liver, lung, placenta, brain, heart, spleen, thymus, testis, ovary, small intestine, colon and leukocytes.

Validation Data



Western Blot analysis using various cell lysate, Proteins were separated by 4-20% SDS-PAGE, and the membrane was blotted with ATM Rabbit mAb diluted at 1:2000. Secondary: Dylight 800, Goat Anti Rabbit IgG(RS23920 1:10000)



Various whole cell lysates were separated by 4-20% SDS-PAGE, and the membrane was blotted with anti-ATM antibody. The HRP-conjugated Goat anti-Rabbit IgG(H + L) antibody was used to detect the antibody.

Lane 1: HeLa

Lane 2: NCCIT

Predicted band size: 351kDa

Observed band size: 351kDa

For Research Use Only