

BACE Rabbit mAb (AR1410)

Key Features

Host Species:	Rabbit
Reactivity:	Human, Mouse, Rat
Applications:	WB, IHC, IF, IP, ELISA
Isotype:	IgG, Kappa
MW:	56kD (Calculated) 70kD (Observed)

Recommended Dilution Ratios

IHC:	1:100-400
WB:	1:1000-5000
IF:	1:200-1000
ELISA:	1:5000-20000
IP:	1:50-200

Storage

-15°C to -25°C/1 year (Do not lower than -25°C)

Basic Information

Clonality	Monoclonal
-----------	------------

Immunogen Information

Specificity	Endogenous
-------------	------------

Target Information

Gene name	BACE1
Protein Name	Beta-secretase 1

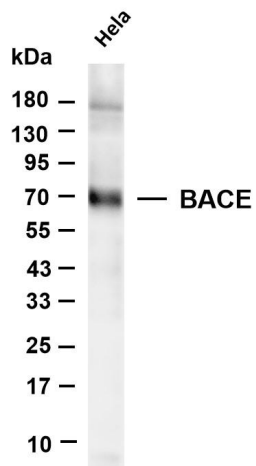
Organism	Gene ID	UniProt ID
Human	23621	P56817
Mouse	23821	P56818
Rat	29392	P56819

Cellular Localization	Membrane, Cytoplasm
-----------------------	---------------------

Tissue specificity	Expressed at high levels in the brain and pancreas. In the brain, expression is highest in the substantia nigra, locus coeruleus and
--------------------	--

medulla oblongata.

Validation Data

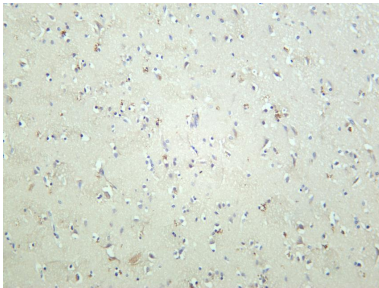


Various whole cell lysates were separated by 4-20% SDS-PAGE, and the membrane was blotted with anti-BACE antibody. The HRP-conjugated Goat anti-Rabbit IgG(H + L) antibody was used to detect the antibody.

Lane 1: HeLa

Predicted band size: 56kDa

Observed band size: 70kDa



Human brain was stained with anti-BACE rabbit antibody

For Research Use Only