

# NABC1 Rabbit mAb (AR1411)

## Key Features

Host Species:	Rabbit
Reactivity:	Human
Applications:	WB
Isotype:	IgG,Kappa
MW:	62kD (Calculated) 62kD (Observed)

## Recommended Dilution Ratios

WB:	1:1000-5000
-----	-------------

## Storage

-15°C to -25°C/1 year (Do not lower than -25°C)

## Basic Information

Clonality	Monoclonal
-----------	------------

## Immunogen Information

Specificity	Endogenous
-------------	------------

## Target Information

Gene name	BCAS1; AIBC1; NABC1
-----------	---------------------

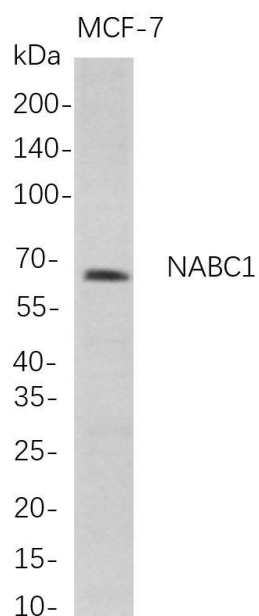
Protein Name	Breast carcinoma-amplified sequence 1; Amplified and overexpressed in breast cancer; Novel amplified in breast cancer 1;
--------------	--

Organism	Gene ID	UniProt ID
Human	8537	O75363
Mouse	76960	Q80YN3
Rat		Q3ZB98

Cellular Localization	Cytoplasm
-----------------------	-----------

Tissue specificity	Highly expressed in the brain and, more specifically, in oligodendrocytes (at protein level). Expressed in the prostate, and at lower levels in testis, intestine and colon. Overexpressed in most breast cancer cell lines and down-regulated in some colorectal tumors. {ECO:0000269 PubMed:10857754, ECO:0000269 PubMed:14567997, ECO:0000269 PubMed:29212715}.
--------------------	--

## Validation Data



Western Blot analysis of MCF-7 whole cell lysates were separated by 4-20% SDS-PAGE, and the membrane was blotted with anti-NABC1 rabbit mAb. The HRP-conjugated Goat anti-Rabbit IgG(H + L) antibody was used to detect the antibody.

Lane 1: MCF-7

Predicted band size: 62kDa

Observed band size: 62kDa

For Research Use Only