

## BDNF Rabbit mAb (AR1412)

### Key Features

|               |  |
|---------------|--|
| Host Species: | Rabbit   |
| Reactivity:   | Human, Mouse, Rat  |
| Applications: | WB, IHC, IF, IP, ELISA   |
| Isotype:      | IgG, Kappa   |
| MW:           | 28kD (Calculated)<br>Precursor 28kD. Mature 12-14kD (Observed) |

### Recommended Dilution Ratios

|        |              |
|--------|--------------|
| IHC:   | 1:2000-10000 |
| WB:    | 1:2000-10000 |
| IF:    | 1:200-1000   |
| ELISA: | 1:5000-20000 |
| IP:    | 1:50-200     |

### Storage

-15°C to -25°C/1 year (Do not lower than -25°C)

### Basic Information

|           |            |
|-----------|------------|
| Clonality | Monoclonal |
|-----------|------------|

### Immunogen Information

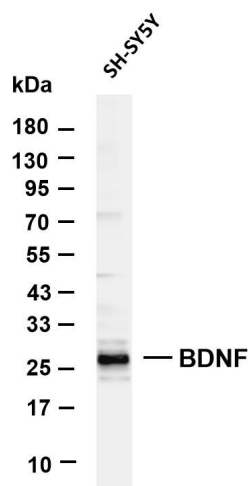
|             |            |
|-------------|------------|
| Specificity | Endogenous |
|-------------|------------|

### Target Information

|              |      |
|--------------|------|
| Gene name    | BDNF |
| Protein Name | BDNF |

| Organism | Gene ID | UniProt ID |
|----------|---------|------------|
| Human    |         | P23560     |

## Validation Data

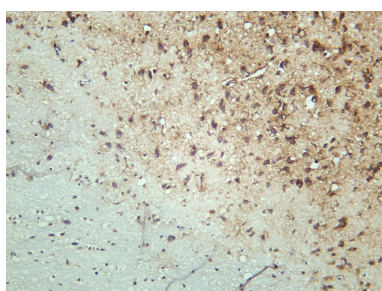


Various whole cell lysates were separated by 4-20% SDS-PAGE, and the membrane was blotted with anti-BDNF antibody. The HRP-conjugated Goat anti-Rabbit IgG (H + L) antibody was used to detect the antibody.

Lane 1: SH-SY5Y

Predicted band size: 28kDa

Observed band size: Precursor 28kDa, Mature 12-14kDa



Mouse brain was stained with anti-BDNF rabbit antibody

For Research Use Only