

## BMAL1 Rabbit mAb (AR1414)

### Key Features

Host Species:	Rabbit
Reactivity:	Human, Mouse, Rat
Applications:	WB, IHC, IF, IP, ELISA
Isotype:	IgG, Kappa
MW:	69kD (Calculated) 78kD (Observed)

### Recommended Dilution Ratios

IHC:	1:200-1000
WB:	1:2000-10000
IF:	1:200-1000
ELISA:	1:5000-20000
IP:	1:50-200

### Storage

-15°C to -25°C/1 year (Do not lower than -25°C)

### Basic Information

Clonality	Monoclonal
-----------	------------

### Immunogen Information

Specificity	Endogenous
-------------	------------

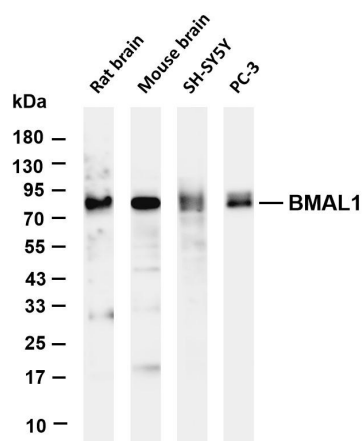
### Target Information

Gene name	ARNTL
Protein Name	Aryl hydrocarbon receptor nuclear translocator-like protein 1

Organism	Gene ID	UniProt ID
Human	406	O00327
Mouse	11865	Q9WTL8
Rat	29657	Q9EPW1

Cellular Localization	Nucleus
Tissue specificity	Hair follicles (at protein level). Highly expressed in the adult brain, skeletal muscle and heart.

## Validation Data



Various whole cell lysates were separated by 4-20% SDS-PAGE, and the membrane was blotted with anti-BMAL1 antibody. The HRP-conjugated Goat anti-Rabbit IgG(H + L) antibody was used to detect the antibody.

Lane 1: Rat brain

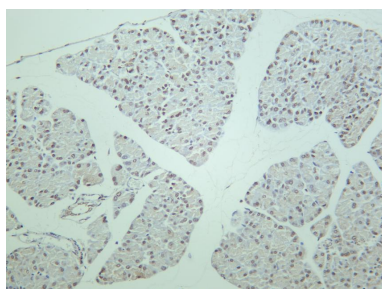
Lane 2: Mouse brain

Lane 3: SH-SY5Y

Lane 4: PC-3

Predicted band size: 69kDa

Observed band size: 78kDa



Rat pancreas was stained with anti-BMAL1 rabbit antibody

For Research Use Only