

## PAX-8 Rabbit mAb (AR1415)

### Key Features

Host Species:	Rabbit
Reactivity:	Human, Mouse, Rat
Applications:	WB, IHC, IF, IP, ELISA
Isotype:	IgG, Kappa
MW:	48kD (Calculated) 55kD (Observed)

### Recommended Dilution Ratios

IHC:	1:200-1000
WB:	1:2000-10000
IF:	1:200-1000
ELISA:	1:5000-20000
IP:	1:50-200

### Storage

-15°C to -25°C/1 year (Do not lower than -25°C)

### Basic Information

Clonality	Monoclonal
-----------	------------

### Immunogen Information

Specificity	Endogenous
-------------	------------

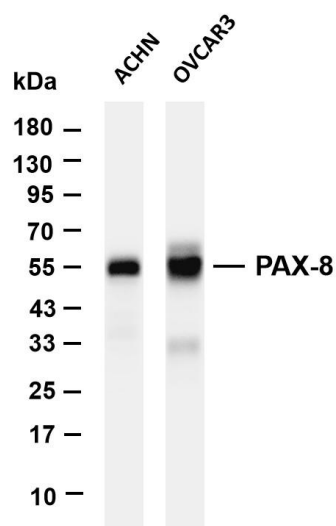
### Target Information

Gene name	PAX8
Protein Name	PAX-8

Organism	Gene ID	UniProt ID
Human	7849	Q06710
Mouse	18510	Q00288
Rat	81819	P51974

Cellular Localization	Nucleus
Tissue specificity	Expressed in the excretory system, thyroid gland and Wilms tumors.

## Validation Data



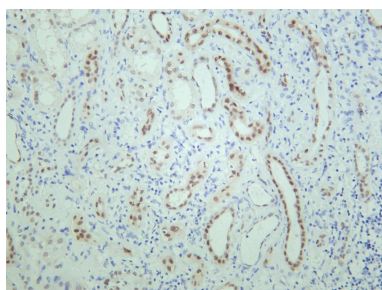
Various whole cell lysates were separated by 4-20% SDS-PAGE, and the membrane was blotted with anti-PAX-8 antibody. The HRP-conjugated Goat anti-Rabbit IgG(H + L) antibody was used to detect the antibody.

Lane 1: ACHN

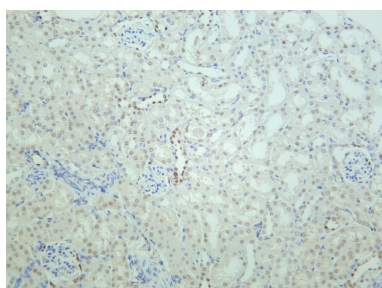
Lane 2: OVACR3

Predicted band size: 48kDa

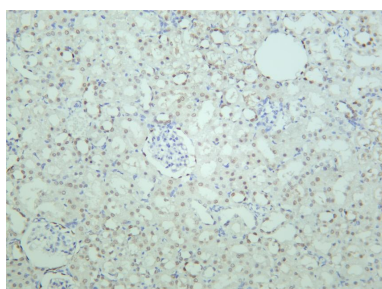
Observed band size: 55kDa



Human kidney was stained with anti-PAX-8 rabbit antibody



Mouse kidney was stained with anti-PAX-8 rabbit antibody



Rat kidney was stained with anti-PAX-8 rabbit antibody