

BTNL3 Rabbit mAb (AR1417)

Key Features

Host Species:	Rabbit
Reactivity:	Human
Applications:	WB,Flow Cyt
Isotype:	IgG,Kappa
MW:	52kD (Calculated) 55kD (Observed)

Recommended Dilution Ratios

WB:	1:1000-5000
FC:	1:100-300

Storage

-15°C to -25°C/1 year (Do not lower than -25°C)

Basic Information

Clonality	Monoclonal
-----------	------------

Immunogen Information

Specificity	Endogenous
-------------	------------

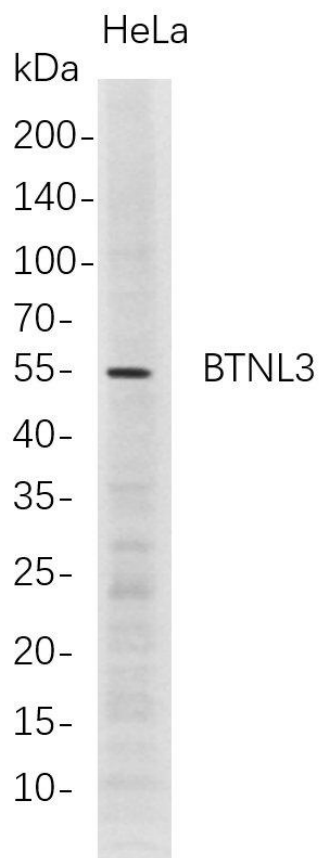
Target Information

Gene name	BTNL3; BTNLR; COLF4100; UNQ744/PRO1472
Protein Name	Butyrophilin-like protein 3; Butyrophilin-like receptor;

Organism	Gene ID	UniProt ID
Human	10917	Q6UXE8

Cellular Localization	Membrane; Single-pass type I membrane protein.
Tissue specificity	Expressed in small intestine, colon, testis, spleen, and leukocyte. {ECO:0000269 PubMed:10429365}.

Validation Data



Western Blot analysis of HeLa whole cell lysates were separated by 4-20% SDS-PAGE, and the membrane was blotted with anti-BTNL3 rabbit mAb. The HRP-conjugated Goat anti-Rabbit IgG(H + L) antibody was used to detect the antibody.

Lane1: HeLa

Predicted band size: 52kDa

Observed band size: 55kDa

For Research Use Only