

BTK Rabbit mAb (AR1416)

Key Features

Host Species:	Rabbit
Reactivity:	Human
Applications:	WB,IHC,IF,IP,ELISA
Isotype:	IgG,Kappa
MW:	76kD (Calculated) 72kD (Observed)

Recommended Dilution Ratios

IHC:	1:1000-4000
WB:	1:2000-10000
IF:	1:200-1000
ELISA:	1:5000-20000
IP:	1:50-200

Storage

-15°C to -25°C/1 year (Do not lower than -25°C)

Basic Information

Clonality: Monoclonal

Immunogen Information

Specificity: Endogenous

Target Information

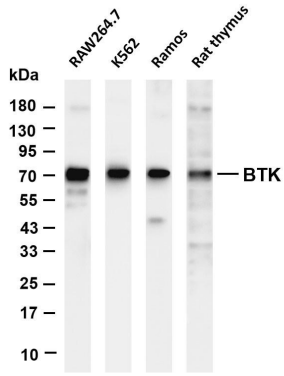
Gene name: BTK
Protein Name: Tyrosine-protein kinase BTK

Organism	Gene ID	UniProt ID
Human	695	Q06187
Mouse	12229	P35991

Cellular Localization: Membrane, Cytoplasm

Tissue specificity: Predominantly expressed in B-lymphocytes.

Validation Data



Various whole cell lysates were separated by 4-20% SDS-PAGE, and the membrane was blotted with anti-BTK antibody. The HRP-conjugated Goat anti-Rabbit IgG(H + L) antibody was used to detect the antibody.

Lane 1: RAW264.7

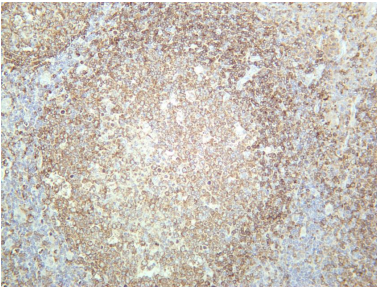
Lane 2: K562

Lane 3: Ramos

Lane 4: Rat thymus

Predicted band size: 76kDa

Observed band size: 72kDa



Human tonsil was stained with anti-BTK rabbit antibody

For Research Use Only