

## C2orf69 Rabbit mAb (AR1419)

### Key Features

Host Species:	Rabbit
Reactivity:	Human
Applications:	WB
Isotype:	IgG,Kappa
MW:	43kD (Calculated) 39kD (Observed)

### Recommended Dilution Ratios

WB:	1:1000-5000
-----	-------------

### Storage

-15°C to -25°C/1 year (Do not lower than -25°C)

### Basic Information

Clonality	Monoclonal
-----------	------------

### Immunogen Information

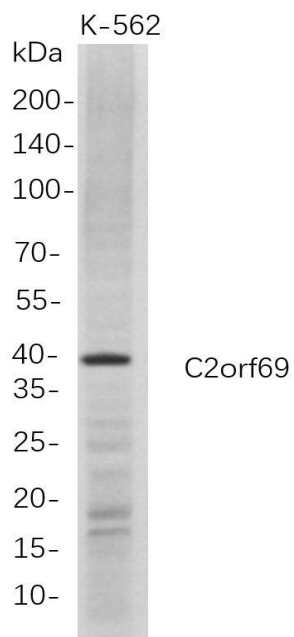
Specificity	Endogenous
-------------	------------

### Target Information

Gene name	C2orf69
Protein Name	Mitochondrial protein C2orf69

	Organism	Gene ID	UniProt ID
	Human	205327	Q8N8R5
Cellular Localization	Mitochondrion matrix.		

## Validation Data



Western Blot analysis of K-562 whole cell lysates were separated by 4-20% SDS-PAGE, and the membrane was blotted with anti-C2orf69 rabbit mAb. The HRP-conjugated Goat anti-Rabbit IgG(H + L) antibody was used to detect the antibody.

Lane 1: K-562

Predicted band size: 43kDa

Observed band size: 39kDa

For Research Use Only