

C3orf38 Rabbit mAb (AR1420)

Key Features

Host Species:	Rabbit
Reactivity:	Human
Applications:	WB
Isotype:	IgG,Kappa
MW:	38kD (Calculated) 38kD (Observed)

Recommended Dilution Ratios

WB:	1:1000-5000
-----	-------------

Storage

-15°C to -25°C/1 year (Do not lower than -25°C)

Basic Information

Clonality	Monoclonal
-----------	------------

Immunogen Information

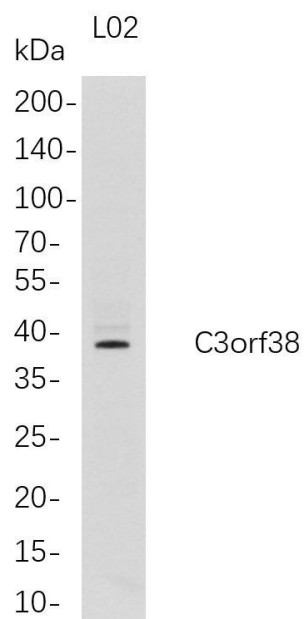
Specificity	Endogenous
-------------	------------

Target Information

Gene name	C3orf38
Protein Name	Uncharacterized protein C3orf38

Organism	Gene ID	UniProt ID
Human	285237	Q5JPI3
Mouse	67609	Q3TTL0
Rat	304176	Q66H33

Validation Data



Western Blot analysis of L02 whole cell lysates were separated by 4-20% SDS-PAGE, and the membrane was blotted with anti-C3orf38 rabbit mAb. The HRP-conjugated Goat anti-Rabbit IgG(H + L) antibody was used to detect the antibody.

Lane1: L02

Predicted band size: 38kDa

Observed band size: 38kDa

For Research Use Only