

## CACNA1F Rabbit mAb (AR1421)

### Key Features

Host Species:	Rabbit
Reactivity:	Human
Applications:	WB,Flow Cyt
Isotype:	IgG,Kappa
MW:	221kD (Calculated) 221kD (Observed)

### Recommended Dilution Ratios

WB:	1:1000-5000
FC:	1:100-300

### Storage

-15°C to -25°C/1 year (Do not lower than -25°C)

### Basic Information

Clonality	Monoclonal
-----------	------------

### Immunogen Information

Specificity	Endogenous
-------------	------------

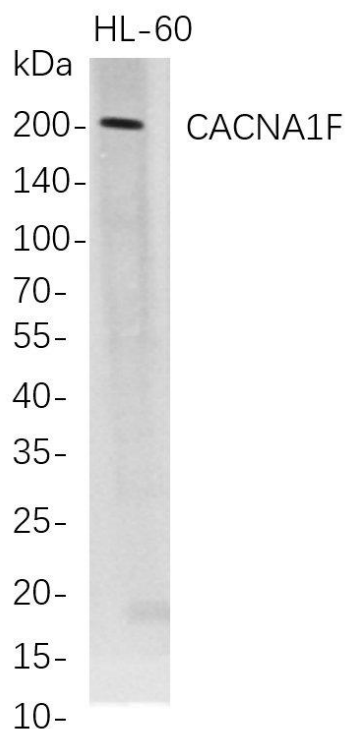
### Target Information

Gene name	CACNA1F; CACNAF1
Protein Name	Voltage-dependent L-type calcium channel subunit alpha-1F; Voltage-gated calcium channel subunit alpha Cav1.4;

Organism	Gene ID	UniProt ID
Human	778	O60840
Mouse		Q9JIS7

Cellular Localization	Membrane; Multi-pass membrane protein.
Tissue specificity	Expression in skeletal muscle and retina (PubMed:10873387). Isoform 4 is expressed in retina (PubMed:27226626). {ECO:0000269 PubMed:10873387,ECO:0000269 PubMed:27226626}.

## Validation Data



Western Blot analysis of HL-60 whole cell lysates were separated by 4-20% SDS-PAGE, and the membrane was blotted with anti-CACNA1F rabbit mAb. The HRP-conjugated Goat anti-Rabbit IgG(H + L) antibody was used to detect the antibody.

Lane 1: HL-60

Predicted band size: 221kDa

Observed band size: 221kDa

For Research Use Only