

## Calnexin Rabbit mAb (AR1422)

### Key Features

Host Species:	Rabbit
Reactivity:	Human
Applications:	WB,IHC,IF,IP,ELISA
Isotype:	IgG,Kappa
MW:	68kD (Calculated) 90kD (Observed)

### Recommended Dilution Ratios

IHC:	1:2000-10000
WB:	1:1000-5000
IF:	1:200-1000
ELISA:	1:5000-20000
IP:	1:50-200

### Storage

-15°C to -25°C/1 year (Do not lower than -25°C)

### Basic Information

Clonality	Monoclonal
-----------	------------

### Immunogen Information

Specificity	Endogenous
-------------	------------

### Target Information

Gene name	CANX
Protein Name	Calnexin

Organism	Gene ID	UniProt ID
Human	821	P27824
Mouse	12330	P35564
Rat	29144	P35565

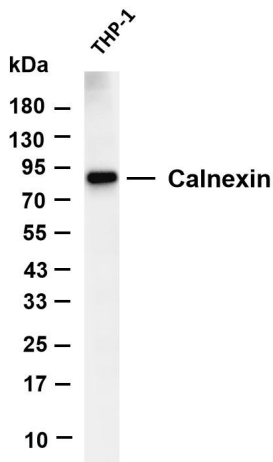
Cellular Localization	Endoplasmic reticulum membrane; Single-pass type I membrane protein. Endoplasmic reticulum. Melanosome. Identified by mass spectrometry in melanosome fractions from stage I to stage IV (PubMed:12643545, PubMed:17081065). The palmitoylated form
-----------------------	---

preferentially localizes to the perinuclear rough ER (PubMed: 22314232).

B-cell lymphoma, Epithelium, Fibroblast, Keratinocyte, Kidney,  
Liver,  
Lymph, Placenta, Platelet

Tissue specificity

## Validation Data

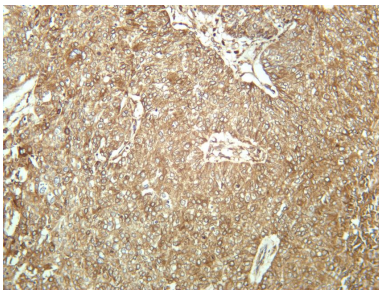


Various whole cell lysates were separated by 4-20% SDS-PAGE, and the membrane was blotted with anti-Calnexin antibody. The HRP-conjugated Goat anti-Rabbit IgG (H + L) antibody was used to detect the antibody.

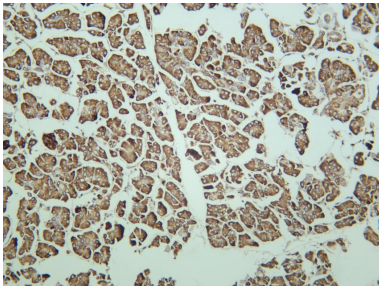
Lane 1: THP-1

Predicted band size: 68kDa

Observed band size: 90kDa



Human breast carcinoma was stained with anti-Calnexin rabbit antibody



Human pancreas was stained with anti-Calnexin rabbit antibody

For Research Use Only