

Caspase-6 Rabbit mAb (AR1423)

Key Features

Host Species:	Rabbit
Reactivity:	Human, Mouse, Rat
Applications:	WB, IHC, IF, IP, ELISA
Isotype:	IgG, Kappa
MW:	33kD (Calculated) 33kD (Observed)

Recommended Dilution Ratios

IHC:	1:200-500
WB:	1:2000-10000
IF:	1:200-1000
ELISA:	1:5000-20000
IP:	1:50-200

Storage

-15°C to -25°C/1 year (Do not lower than -25°C)

Basic Information

Clonality	Monoclonal
-----------	------------

Immunogen Information

Specificity	Endogenous
-------------	------------

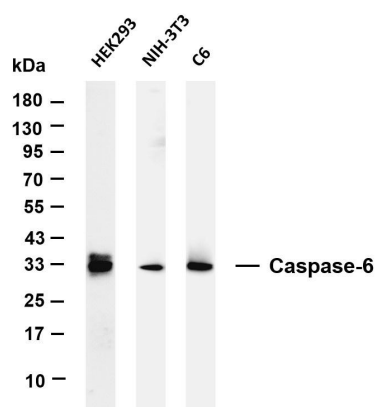
Target Information

Gene name	CASP6
Protein Name	Caspase6

Organism	Gene ID	UniProt ID
Human	839	P55212
Mouse	12368	O08738
Rat		O35397

Cellular Localization	Cytoplasm. Nucleus.
Tissue specificity	Lung, Lymphocyte, T-cell

Validation Data



Various whole cell lysates were separated by 4-20% SDS-PAGE, and the membrane was blotted with anti-Caspase-6 antibody. The HRP-conjugated Goat anti-Rabbit IgG(H + L) antibody was used to detect the antibody.

Lane 1: HEK293

Lane 2: NIH-3T3

Lane 3: C6

Predicted band size: 33kDa

Observed band size: 33kDa

For Research Use Only